



NATIONAL GALLERY SINGAPORE



APR-JUN  
2025

# GUIDE+ MAP



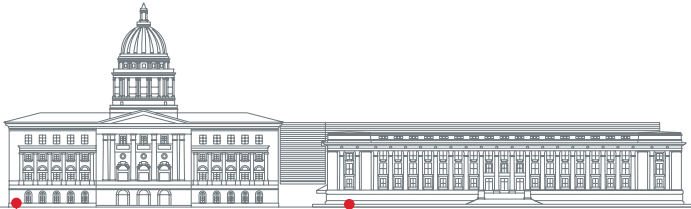
SCAN FOR  
DIGITAL COPY

LET *Art* SURPRISE YOU



# Welcome to National Gallery Singapore

National Gallery Singapore is celebrating its 10<sup>th</sup> anniversary this year as a leading visual arts institution and the largest modern and contemporary art museum in Southeast Asia. Dedicated to making art accessible, the Gallery engages audiences of all ages through its exhibitions, educational programmes and public festivals. Housed in two national monuments, it stands as an iconic cultural landmark where architectural grandeur meets deep historical significance.



## SUPREME COURT WING

- Level 1:** *Angin Cloud* by Art Labor
- Levels 3–5:** *Between Declarations & Dreams: Art of Southeast Asia Since the 19<sup>th</sup> Century*
- Level 3:** *Dalam Southeast Asia: Diplomacy and Desire: Basoeki Abdullah in Singapore*
- Level 3:** *Laws of Our Land: Foundations of a New Nation*

## CITY HALL WING

- Level B1:** *Dalam Collection: Where Ink Tides Meet*
- Level 1:** *Eidolon* by Vong Phaophanit and Claire Oboussier
- Level 2:** *Singapore Stories: Pathways and Detours in Art* (Fully open in Jul 2025)
- Level 3:** *City of Others: Asian Artists in Paris, 1920s–1940s*
- Level 4:** *Fernando Zóbel: Order is Essential*
- Level 5:** Ng Teng Fong Roof Garden Commission: *GLISTEN* by Lisa Reihana

# Need a guide?



Looking for an itinerary to guide your visit? Select from a range of Self-Guided Tours—whether you are visiting for the first time, looking for a tour of our iconic masterpieces or just here for the 'gram, there is something for everyone!



SCAN TO TRY

## AN ACCESSIBLE EXPERIENCE FOR ALL

The Gallery is committed to creating an inclusive experience that can be enjoyed by visitors with access needs.



SCAN FOR ACCESS GUIDE

Located at City Hall Wing, Level B1, the **Calm Room** is a dedicated space where visitors can rest if they are feeling overstimulated or overwhelmed by their environment.



## FREE WI-FI

Connect to our free visitor Wi-Fi: **"Gallery Visitors"**

## PHOTOGRAPHY & RECORDINGS

Please note that photographs, video and audio recordings may be taken in and around our premises from time to time. By entering the Gallery, you consent to having any photographs or recordings taken of you used by the Gallery for publishing, marketing and other purposes. Please approach our Gallery staff should you have any concerns.



## LEGEND

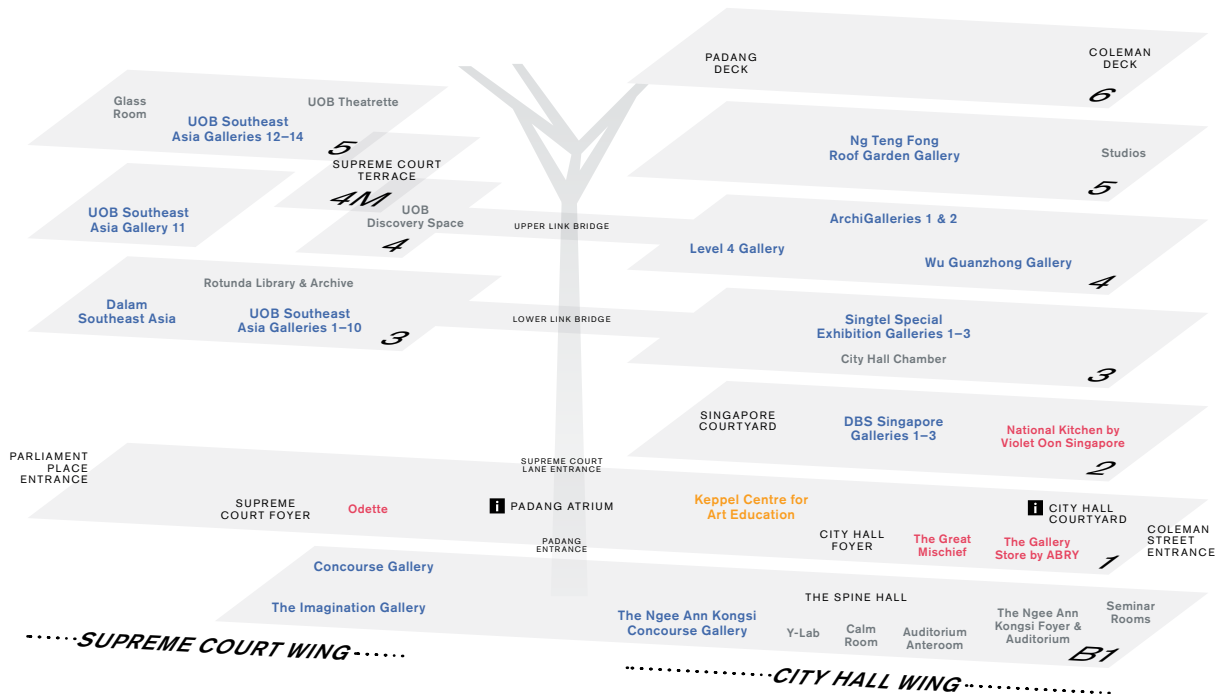
- Galleries
- Education
- Shop & Dine
- Museum Services and Special Facilities
- MUSEUM SPACES

### **i** Available at Visitor Services

Level 1 Padang Atrium and  
Level 1 City Hall Courtyard

- Gallery Passes
- Tours
- Lost & Found

Carparks at City Hall Wing,  
Levels B2 and B3 accessible  
via Lift Lobbies A and B only



# Must-Sees!



Raden Saleh's *Boschbrand (Forest Fire)*

- Supreme Court Wing, Level 3,  
UOB Southeast Asia Gallery 2

This monumental painting depicts wild animals chased by flames in a dense, elaborate composition. A year after it was gifted to his patron King Willem III of the Netherlands, Raden Saleh was awarded the title of "King's Painter."

This work has been adopted by Yong Hon Kong Foundation.



Georgette Chen's  
*Self Portrait*

- City Hall Wing, Level 2,  
DBS Singapore Gallery 1

Perhaps the most famous image of Georgette Chen, her gaze in this painting meets that of the viewer, firmly establishing her presence and encapsulating her dedication to presenting herself as a professional artist.

Gift of Lee Foundation.

## SELF-GUIDED TOUR

Catch eight iconic and historically significant artworks on our must-see list!

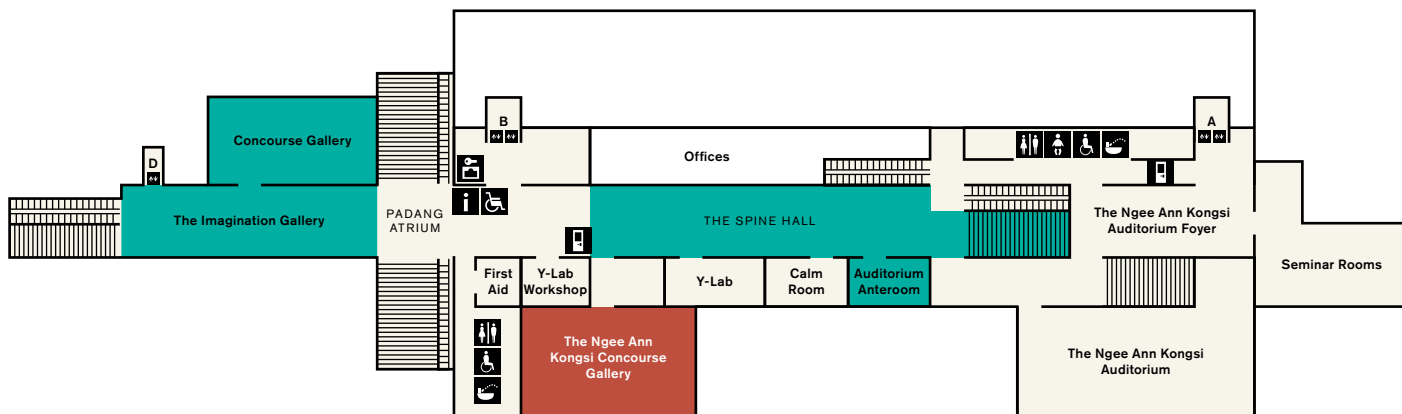


SCAN TO TRY NOW



For the latest information on our exhibitions and festivals, scan the QR code to visit [nationalgallery.sg/whats-on](http://nationalgallery.sg/whats-on).





..... SUPREME COURT WING .....

..... CITY HALL WING .....



## Gallery Children's Biennale 2025: Tomorrow We'll Be...

Various locations within the Gallery on Levels B1 and 1

The Gallery Children's Biennale (GCB) embodies the Gallery's commitment to inspire young and curious minds with art.

The fifth edition of GCB returns on 31 May 2025 with the theme of **Tomorrow We'll Be...**, inviting children to reflect on the endless possibilities of their future by exploring four core values: **Joy, Kindness, Dream and Love**. Both children and adults alike can look forward to eight multi-sensorial artwork installations by local and international artists, as well as a series of fun and engaging programmes!

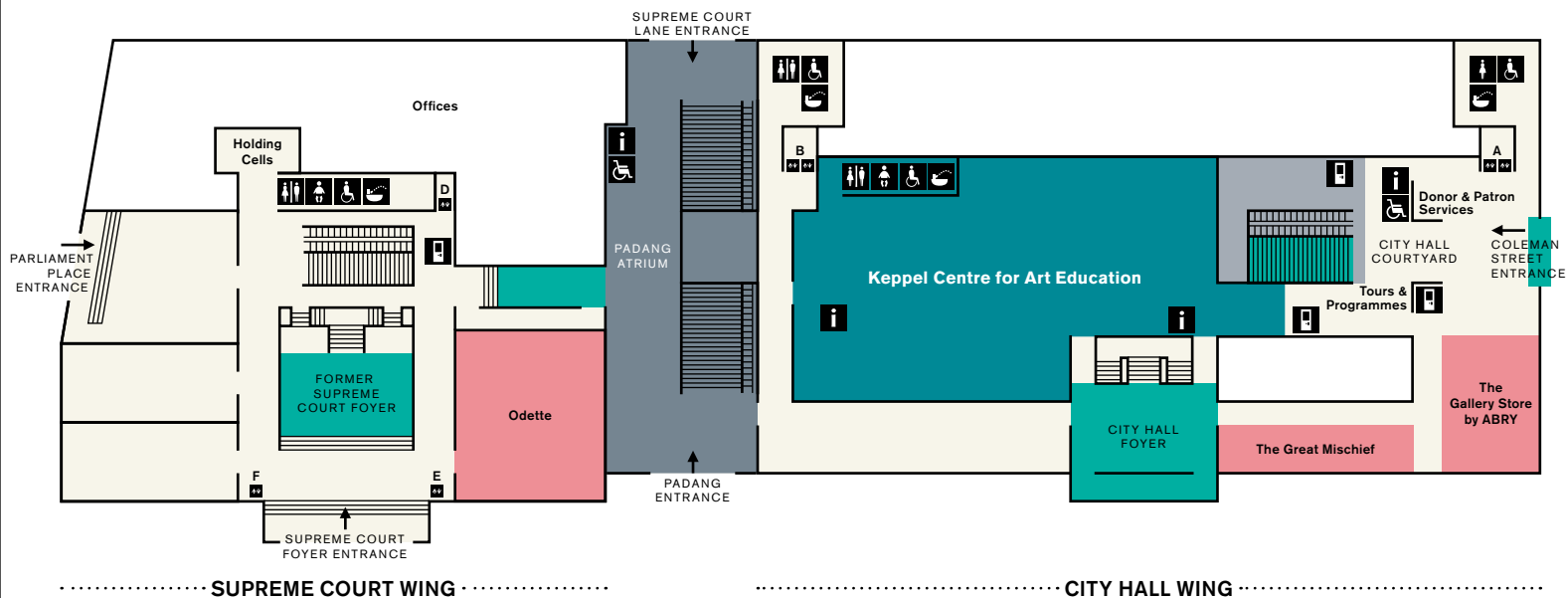
**NEW!**  
OPENS  
31 MAY

## Dalam Collection: *Where Ink Tides Meet*

City Hall Wing, Level B1, The Ngee Ann Kongsi Concourse Gallery

*Where Ink Tides Meet* will showcase over 50 new acquisitions and previously unseen works, emphasising the Gallery's growing ink collection and its ongoing commitment to the research and acquisition of ink art.

**NEW!**  
OPENS  
6 JUN



**Angin Cloud** by Art Labor

Padang Atrium

*Angin Cloud*, part of the Gallery's OUTBOUND series, imagines the rural industrialisation of a hill side from Vietnam's Central Highlands. Pairing Jrai wood sculptures and suspended pillars that recall farming structures for growing pepper vine, the installation references *angin*, a Jrai concept that revolves around the dynamic potential for change found in water and air.

FREE  
FOR ALL



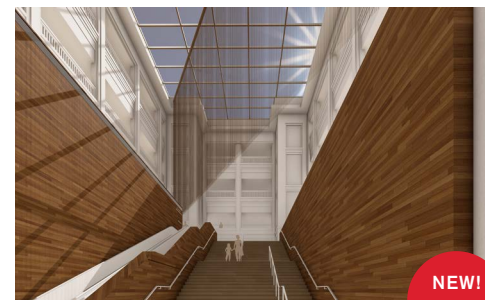
**Keppel Centre for Art Education**

City Hall Wing, Level 1

The Keppel Centre for Art Education aims to foster lifelong love for art in children with a fun learning experience for the entire family to enjoy. Inspired by the theme of **Art & Wonder**, the Centre features seven learning zones, with stimulating and interactive experiences for children aged 4 to 12 to learn about art through play.

FREE  
FOR ALL

The Gallery is grateful to Keppel for their generous support in making the Keppel Centre for Art Education possible.

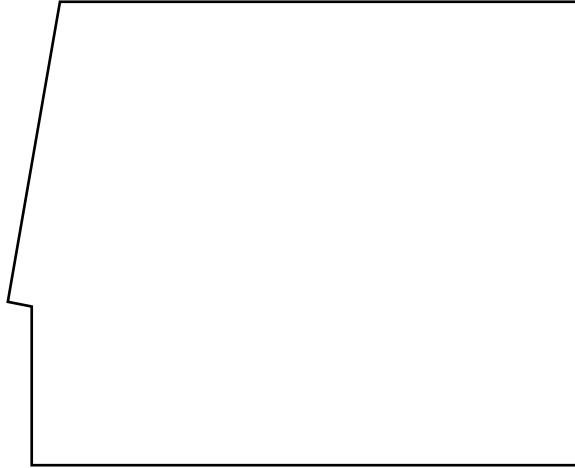


**Eidolon** by Vong Phaophanit and Claire Oboussier

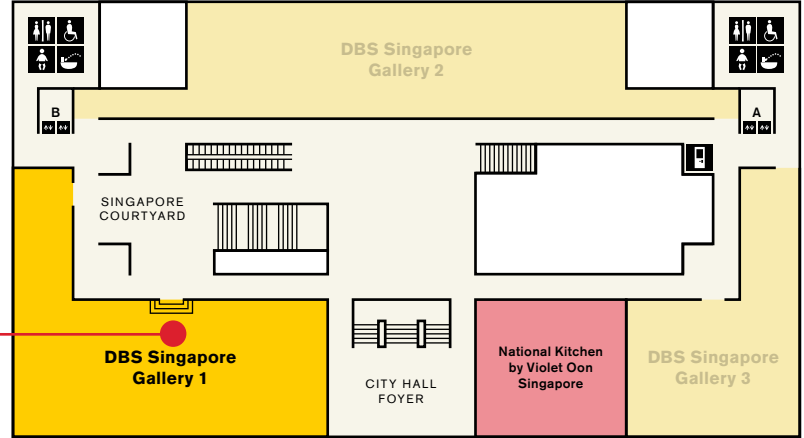
City Hall Wing, City Hall Courtyard

*Eidolon* is an intervention that plays on multiple registers—architectural, historical, critical and poetic. A diagonal plane bisecting the City Hall Courtyard, it evokes a veil, threshold, mirage or spectre. Monumental yet ethereal, its asymmetry subtly disrupts the space, prompting a shift in visitors' perception and movement.

NEW!  
FREE  
FOR ALL



**MUST-SEE!**  
Georgette Chen's  
Self Portrait



..... SUPREME COURT WING .....

..... CITY HALL WING .....



### Singapore Stories: Pathways and Detours in Art

City Hall Wing, Level 2,  
DBS Singapore Gallery\*

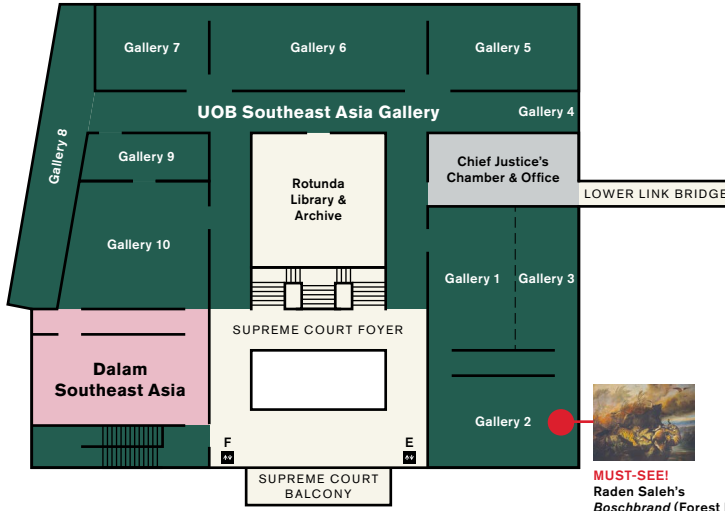
\*Galleries 2 and 3 will re-open  
in Jul 2025.

This new exhibition presents a layered, ever-changing story of Singapore's art history, as it continually questions itself: Whose story is this? Where is home? What is new? Who is looking? What is art for? See iconic artworks from the 19<sup>th</sup> century to present by artists from diverse communities, identities and subject areas, including artists such as Georgette Chen, Liu Kang and more.

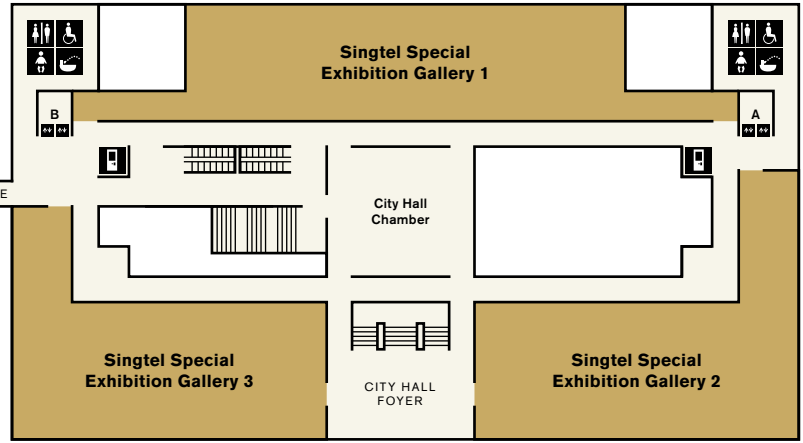
DBS Singapore Gallery  
 Highlights Tour  
 English Thu–Sun 3.30pm  
 Mandarin Sat–Sun 2.30pm

The DBS Singapore Gallery is made possible with the support of DBS Bank.



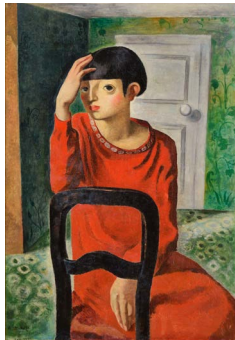


**MUST-SEE!**  
Raden Saleh's  
*Boschbrand* (Forest Fire)



..... SUPREME COURT WING .....

..... CITY HALL WING .....



**NEW!**  
OPENS  
2 APR



**NEW!**  
OPENS  
9 MAY

**City of Others: Asian Artists in Paris, 1920s–1940s**

**City of Others**  
Public Tour (From 24 Apr)  
English Thu–Sun 3.30pm  
Mandarin Sat–Sun 1.30pm

**City of Others**  
Curator Tour  
Sat 5 Apr, 14 Apr, 14 Jun | 2pm  
Sun 22 Jun | 2pm

This groundbreaking special exhibition explores the experiences of Asian artists in Paris during the 1920s to 1940s. Featuring over 200 works, including paintings, sculptures, lacquer ware, decorative arts and rare archival records, it showcases artists like Foujita Tsuguharu, Lê Phổ, Liu Kang and Amrita Sher-Gil, revealing how they lived, worked and exhibited during this dynamic period.

The Singtel Special Exhibition Gallery is made possible with the support of Singtel.

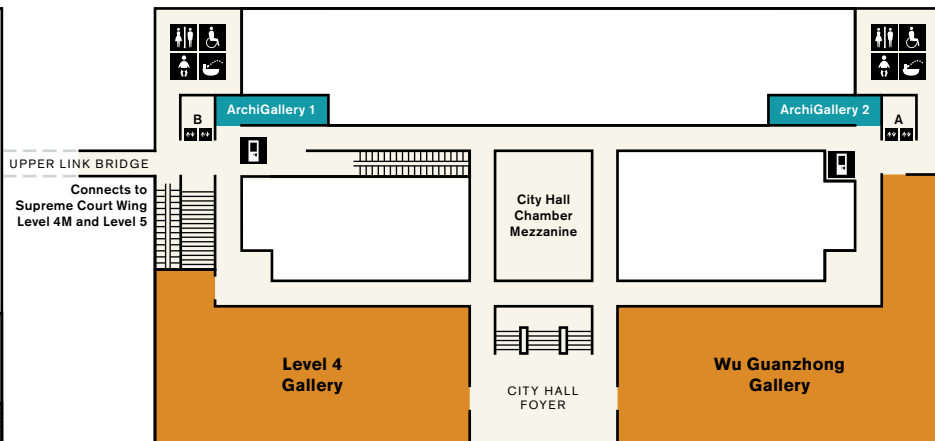
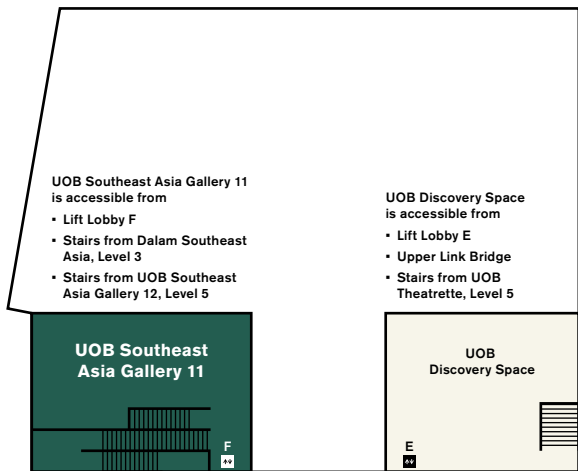


**Diplomacy and Desire: Basoeki Abdullah in Singapore**

**Diplomacy and Desire**  
Supreme Court Wing, Level 3, UOB Southeast Asia Gallery, Dalam Southeast Asia

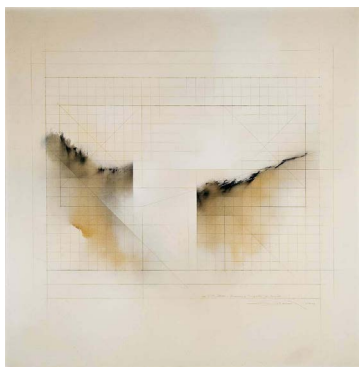
*Diplomacy and Desire: Basoeki Abdullah in Singapore* is an exhibition of artworks by the Indonesian painter Basoeki Abdullah (1915–1993) who is known for his paintings of stalwart statesmen and attractive women. The highlights of the exhibition are two paintings that the artist gifted to Singapore in 1959 and 1981.

*Diplomacy and Desire* Curator Tour Sun 11 May | 2pm



..... SUPREME COURT WING .....

..... CITY HALL WING .....



NEW!  
OPENS  
9 MAY

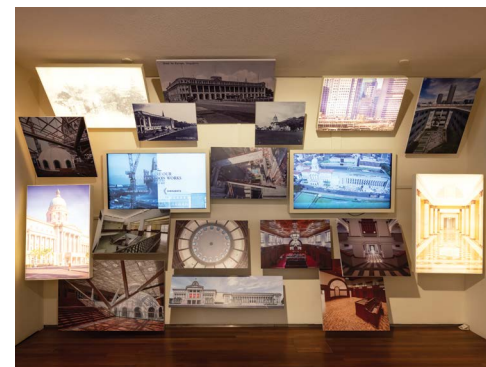
### **Fernando Zóbel: Order is Essential**

City Hall Wing, Level 4,  
Wu Guanzhong Gallery  
and Level 4 Gallery

Explore Singapore's first solo exhibition on Fernando Zóbel, a transcontinental artist, thinker and art patron who shaped a language in international abstraction and instilled the vital beauty of order in the unpredictable creative process.

The exhibition is an iteration expanding on *Zóbel: The Future of the Past*, an exhibition held at the Museo Nacional del Prado, Madrid, Spain (2022) and Ayala Museum, Manila, Philippines (2024).

*Fernando Zóbel*  
Public Tour (From 23 May)  
English Thu–Sun 11am  
Mandarin Sat–Sun 2pm

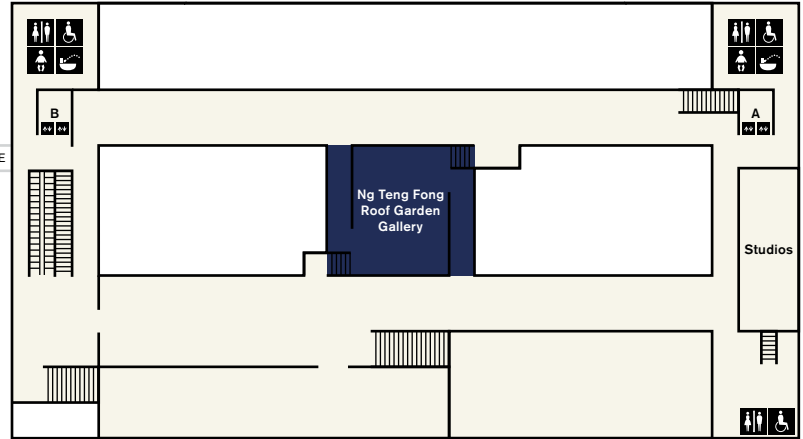
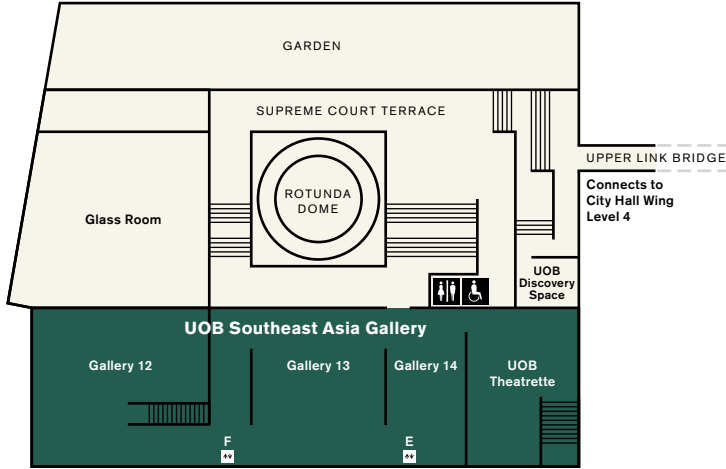


### **Listening to Architecture: The Gallery's Histories and Transformations**

City Hall Wing, Level 4,  
ArchiGallery

*Listening to Architecture* traces the journey of the City Hall and former Supreme Court buildings through a multi-sensory immersive experience, from the origins of their sites to their dramatic transformation into National Gallery Singapore.





..... SUPREME COURT WING .....

..... CITY HALL WING .....



***Between Declarations and Dreams:***  
***Art of Southeast Asia Since the 19<sup>th</sup> Century***

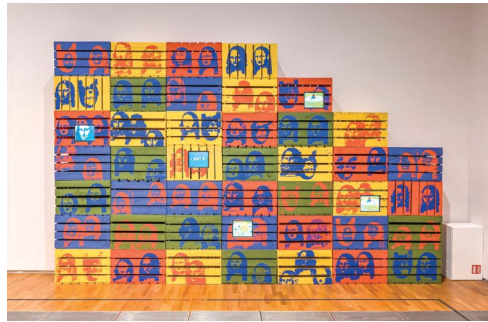
Supreme Court Wing,  
Levels 3–5, UOB Southeast Asia Gallery

In this exhibition, Southeast Asian art history is characterised by a continuous encounter with the new, as the region's artists reinvented vernacular expressions and aesthetics.

See Apinan Poshyananda's pathbreaking video installation, *How to Explain Art to a Bangkok Cock* (above), in **UOB Southeast Asia Gallery 12**, as well as new displays in galleries 1, 2, 5, 8, 9 and 11.

The UOB Southeast Asia Gallery is made possible with the support of UOB.

**UOB Southeast Asia Gallery**  
**Highlights Tour**  
 English Thu–Sun 2pm  
 Mandarin Sat–Sun 4pm



**Ng Teng Fong Roof Garden Commission:**  
**GLISTEN by Lisa Reihana**

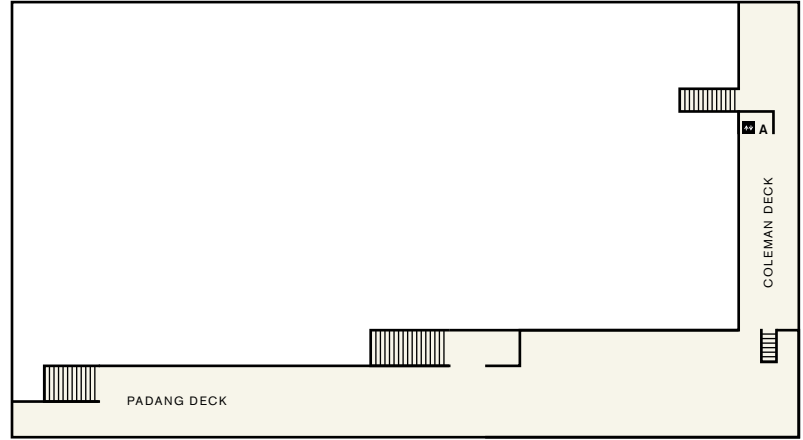
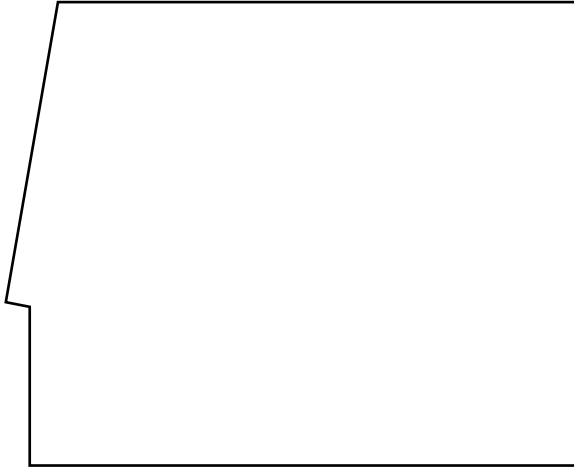
City Hall Wing, Level 5,  
Ng Teng Fong Roof Garden Gallery

Be dazzled by the shimmering discs and soundscape of Aotearoa New Zealander contemporary artist Lisa Reihana's *GLISTEN*, a striking kinetic large-scale outdoor installation adorned with patterns inspired by Southeast Asian Songket and Māori Tāniko weaving.

SERIES PARTNER



The Ng Teng Fong Roof Garden Commission series is made possible with the support of Far East Organization.



..... CITY HALL WING .....

## GALLERY ETIQUETTE



Food and drinks are not permitted in the galleries and public spaces.



No flash photography or videography in the galleries. The use of selfie sticks, tripods and lighting equipment is not permitted in the galleries.



Please do not touch the artworks. Even clean hands can damage surfaces.



Large bags and bulky items including umbrellas should be stored in lockers located at City Hall Wing, Level B1.



Children must be accompanied by an adult at all times in the Gallery.



Pencil sketching is permitted in the galleries with sketchbooks no larger than 22 × 28cm.



Charcoal, pastel, permanent markers, watercolour and oil paint are not permitted.

### Image credits

#### Level 5 & 4M

(Middle) Apinan Poshyananda. *How to Explain Art to a Bangkok Cock*. 1985, reconstructed 2019. Painted crates and LCD monitors, 270 × 360 × 50 cm. Collection of National Gallery Singapore.

(Right) Lisa Reihana (Ngā Puhī, Ngāti Hine, Ngāi Tūteauru, Ngāi Tūpoto). *GLISTEN*. 2024. Steel frames, shimmer discs and wind chime.

#### Level 4

(Left) Fernando Zóbel. *The View XXIV*. 1974. Oil on canvas, 120 × 120 cm. Private Collection.

(Middle) Fernando Zóbel. *Saeta 44*. 1957. Oil on canvas, 61.3 × 91.5 cm. Collection of National Gallery Singapore. This acquisition was made possible through the generous support of Lam Soon Cannery Pte Ltd.

#### Level 3

(Left) Itakulla Kanae. *Woman in a Red Dress*. 1929. Oil on canvas, 116 × 80.3cm. Collection of Matsudo City Board of Education.

(Middle-left) Liu Kang. *Breakfast*. 1932. Oil on canvas, 44.5 × 53.5cm. Collection of National Gallery Singapore.

(Middle-right) Amrita Sher-Gil. *Untitled (Woman Wearing Shawl)*. 1932. Oil on canvas, 42 × 33 cm. Collection of The Dabriwala Family.

(Right) Basoeki Abdullah. *Labour*. c. 1959s. Oil on canvas, 195 × 293 cm. Gift of Ministry of Culture. Collection of National Gallery Singapore. Image courtesy of National Heritage Board, Singapore.

#### Level 2

(Left) Wee Kong Chai. Detail of *Storyteller*. 1962. Oil on canvas, 68.5 × 122 cm. Collection of National Gallery Singapore.

(Middle) Liu Kang. *Working At the Brick Factory*. 1954. Oil on canvas, 97.8 × 128.6 cm. Gift of the artist's family. Collection of National Gallery Singapore.

(Right) Georgette Chen. *Family Portrait*. c. 1954–1955. Oil on canvas, 161.5 × 130.2 cm. Gift of the artist's estate. Collection of National Gallery Singapore.

#### Level B1

(Right) Tang Da Wu. Detail of *Flowing Water*. Ink on paper, 109 × 79 cm. Collection of National Gallery Singapore. © Tang Da Wu.

#### Must-Sees

(Left) Raden Saleh. Detail of *Boschbrand (Forest Fire)*. 1849. Oil on canvas, 300 × 396 cm. Collection of National Gallery Singapore. This work has been adopted by Yong Hon Kong Foundation.

(Middle) Georgette Chen. *Self Portrait*. c. 1946. Oil on canvas, 22.5 × 17.5 cm. Gift of Lee Foundation. Collection of National Gallery Singapore.

# Tours

We're always adding new tours held in conjunction with ongoing exhibitions. Please check our website for the latest tour information.



SCAN FOR  
LATEST INFO



## DAILY TOURS

Explore the rich history of our buildings and collections by joining one of our guided tours led by trained docents. Tours last approximately 60 minutes, unless stated otherwise.

*To reserve a slot, proceed to our Tours & Programmes counter (City Hall Wing, Level 1) or Visitor Services counter (Padang Atrium, Level 1) at least 30 minutes before the tour starts. Limited slots are available on a first-come, first-served basis. Tour participants should purchase a pass before joining a tour, with the exception of the Building Highlights Tour, which does not require any passes.*

### BUILDING HIGHLIGHTS

English Thu–Sun 10.30am |  
Mandarin Sat–Sun 11.30am |  
**FREE!** No pass required,  
on-site registration required

Learn more about the national monuments—City Hall and the former Supreme Court—which have stood witness to many of Singapore's historic moments, and the decade-long renovation that united and transformed these majestic buildings into a home for the arts.

### HIGHLIGHTS OF THE GALLERY

English Mon–Fri 11am |  
Mandarin Sat–Sun 11am |  
Japanese 1<sup>st</sup> and 3<sup>rd</sup> Thu 1.30pm |  
General Admission Pass required,  
to be purchased separately

Get a glimpse of the best that the Gallery has to offer on this sweeping tour. Our docents will introduce you to key architectural features of our historic buildings, as well as selected masterpieces from our exhibitions on the art of Singapore and Southeast Asia.

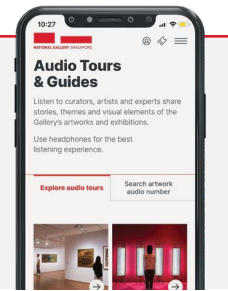
**Latest information on other various exhibition tours is available on the map and on our website.**

## AUDIO TOURS & GUIDES

Listen to curators, artists and experts as they share stories, themes and visual elements of the Gallery's artworks and exhibitions.



SCAN TO  
LISTEN



## SPECIAL TOURS



### BACK-OF-HOUSE TOUR:

#### “FORMER SUPREME COURT: UNSEEN, UNHEARD”

Sat 2.30pm, Sun 4.30pm | Standard \$40, Local \$25 |

Tickets include admission to General Admission exhibition spaces |  
20% off for Gallery Insiders

This 90-minute tour offers a glimpse into restricted areas of the former Supreme Court, which are usually out of bounds to the public. Go behind the scenes and find out more about courtroom proceedings and the experience of persons on trial.

THE TOUR IS NOT SUITABLE FOR VISITORS BELOW THE AGE OF 13 AND VISITORS WITH LIMITED MOBILITY. PLEASE WEAR COMFORTABLE FOOTWEAR AND ATTIRE.

## GROUP TOURS

We provide a variety of group tour options upon request. For more information, please email [GroupEnquiries@nationalgallery.sg](mailto:GroupEnquiries@nationalgallery.sg).

## VENUE RENTAL & SHOOTS

Blending rich history with exciting modernity, the Gallery's unique and timeless spaces are ideal for hosting events and shooting memorable photos and videos. For more information, please visit [nationalgallery.sg/venue-rental](http://nationalgallery.sg/venue-rental).

# Activities

Special tours, art talks, workshops, film screenings and music performances are held regularly at the Gallery. Scan the QR code to sign up!



SCAN TO  
SIGN UP



SCAN TO  
REGISTER

## “BALI AND BEYOND: TRACING THE ROLE OF PHOTOGRAPHY IN LIU KANG’S ARTISTIC PRACTICE” BY GRETCHEN LI

Sat 10 May | 2pm | National Gallery Singapore, City Hall Wing, Level B1, The Ngee Ann Kongsi Auditorium | Free, register online via Gallery website

With the large number of photographs taken by Liu Kang (b. 1911, China; d. 2004, Singapore) during the 1952 trip to Bali as a focal point, the seventh edition of the Liu Kang Annual Lecture explores the place of photography in the artist’s artistic process. As a writer with an interest in visual culture and heritage, Gretchen Liu will examine the intersections between photography, sketching and painting—highlighting how photography provided a means of documentation and source of compositional inspiration for the artist both before and beyond the 1952 trip.

The lecture will be complemented by a discussion with the curators of National Library Singapore’s *Untold Stories: Four Singapore Artists’ Quest for Inspiration in Bali 1952*, Nadia Ramli and Goh Yu Mei. Moderated by National Gallery Singapore curator Teo Hui Min, this programme will offer new insights into what drew Liu Kang to Indonesia and the impact of the experience on Liu Kang’s artistic practice.

Liu Kang. *Artist and Model*. 1954. Oil on canvas, 84 × 124 cm.  
Gift of Shell Companies in Singapore. Collection of National Gallery Singapore.



NEW  
ONLINE  
COURSE!



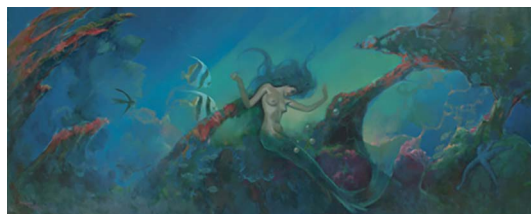
SCAN TO  
SIGN UP

## ART AND THE ENVIRONMENT IN SOUTHEAST ASIA: LANDSCAPE AS IDEOLOGY

Are these peacefully depicted landscapes fact or fiction? From romanticised 19<sup>th</sup>-century colonial representations to depictions of nations in development, join us in unearthing the relationship between landscape and art in our latest online course. Journey with experts as we examine how ideology shapes our perceptions of the land.

Connect with our curious global community and share your thoughts with fellow learners today!

John Turnbull Thomson. *Singapore*. 1851. Oil on canvas, 57.3 × 88 cm. Collection of National Gallery Singapore. This acquisition was made possible with donations to the Art Adoption & Acquisition Programme.



SCAN TO  
LISTEN

## NO FLASH PODCAST SEASON 2: *THIRD EYE*

Experience the thrill of speculative fiction in *Third Eye*, the second season of the NO FLASH podcast! Look beyond the obvious as artworks from our collection are reimagined anew. These mysterious, macabre and magnificent tales are spun by some of Singapore’s most exciting writers, including Bani Haykal, Diana Rahim, Lisabelle Tay, Manish Melwani, Ng Yi-Sheng and Wen-Yi Lee, with original scoring and sound design by Mervin Wong.

Basoeki Abdullah. *Struggle for the Re-establishment of the Democracy and the Right for the People*. 1981. Oil on canvas, 200 × 490 cm. Gift of the artist. Collection of National Gallery Singapore.



# GalleryKids!

Enjoy programmes specially designed to develop curiosity, imagination and the appreciation of art in children. Scan the QR code for the latest programme information.



SCAN FOR  
LATEST INFO

## KIDS' PROGRAMMES AND ACTIVITIES

City Hall Wing, Level 1, Keppel Centre for Art Education



Inspired by the theme **Art & Wonder**, Keppel Centre for Art Education features multiple educational zones in which families and children can experience the world of art through play, creativity and imagination.

## MONTHLY PROGRAMMES



### GalleryToddlers!

Want to engage your toddler in the Gallery but don't know where to start? GalleryToddlers! invites children and parents to take part in sensory play inspired by different artworks each month!

## SCHOOL HOLIDAY PROGRAMMES



### Let's Create!

Join an artist-led workshop that invites children to explore diverse art techniques and mediums and engage in creative activities, deepening their understanding of artworks in the Gallery.



### ARTventure Camp

At our thematic ARTventure Camps, participants will dive into exciting hands-on activities, interactive gallery tours and fun collaborative projects—all designed to inspire creativity and imagination!



Free entry for all | 31 May 2025 to 29 March 2026

The highly anticipated fifth edition of the Gallery Children's Biennale coincides with the Gallery's 10<sup>th</sup> anniversary. Through the overarching theme of **Tomorrow We'll Be...**, this Biennale invites children and families to reflect on the endless possibilities of their future by exploring the four core values of **Joy, Kindness, Dream and Love**.

Look forward to eight multi-sensorial artwork installations by local and international artists such as **Fern Wong, Wyn-Lyn Tan, Vicente Delgado, Co2\_karbon dioksida, Souliya Phoumivong** and **Hiromi Tango**. The artists' responses to the theme and core values are expressed through unique and site-specific installations throughout the Gallery.

Enjoy the Biennale for free as well as participate in a series of fun and engaging programmes throughout the Biennale period.

*The Gallery Children's Biennale has been one of National Gallery Singapore's signature events since 2017, embodying the Gallery's commitment to inspire young and curious minds with art. It aims to explore the many ways that children can learn and play while engaging more with the world around them.*

Development Partner

**toteboard**  
Giving Hope. Improving Lives.

Matched by

**CULTURAL  
MATCHING  
FUND**

Major Partner

**STEPHEN RIADY  
FOUNDATION**

# Shop & Dine

The Gallery has a suite of specially curated dining and retail spaces— including Michelin-starred restaurants— that offer a variety of cuisines and unique museum merchandise.

 Reservations are highly encouraged



SCAN FOR  
MORE INFO



## The Gallery Store by ABRY

Books and museum gifts

City Hall Wing, Level 1

Daily 10am–7pm



## National Kitchen by Violet Oon Singapore



Singaporean restaurant, \$\$

City Hall Wing, Level 2

Tel: 9834 9935

Lunch and Dinner: Daily noon–3pm,  
6–10.30pm | High Tea: Fri–Sun,  
public holidays 3–5pm



## Odette

Modern French restaurant, \$\$\$\$

Supreme Court Wing, Level 1

Tel: 6385 0498

Tue–Sat noon–1.15pm (last seating),  
Mon–Sat 6.30–8pm (last seating),  
Closed on Sun and public holidays



## The Great Mischief

Spanish café, Muslim friendly, \$\$

City Hall Wing, Level 1

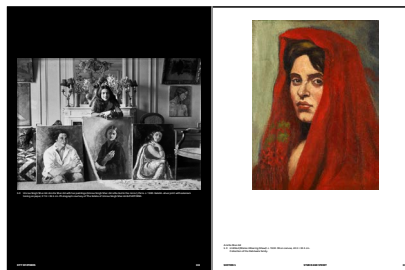
Tel: 8721 3150

Daily 10am–9.30pm

## GALLERY PUBLICATIONS

Explore the art of Singapore and Southeast Asia through our illustrated publications. Our growing range includes exhibition catalogues, research titles and children's books.

Check them out at **The Gallery Store by ABRY** or online at **abry.global**.



Inside pages of the *City of Others* exhibition catalogue

## CITY OF OTHERS: ASIAN ARTISTS IN PARIS, 1920s–1940s

Exhibition concept booklet | Approx. 48 pages | Paperback | \$14 (including GST)

This illustrated guide presents key highlights of the exhibition and essential curatorial texts in a handy format.

Exhibition catalogue | Approx. 396 pages | Paperback | \$55 (including GST)

With over 300 full-colour artwork and archival images, curatorial essays as well as translations into English of primary sources—such as artists' letters and exhibition texts from the period—the catalogue is an exciting source of new comparative research on the lives and works of Asian artists in Paris.

## ZÓBEL: ORDER IS ESSENTIAL

Approx. 196 pages | Paperback | \$55 (including GST)

*Zóbel: Order Is Essential* covers the full scope of Fernando Zóbel's oeuvre. The catalogue features five curatorial essays offering new insights into Zóbel's transnational practice. The full-colour plates are broken into four geographical sections, New England, Manila, Madrid and Cuenca, and trace the evolution of Zóbel's work and influences.

National Gallery Singapore is embarking on a holistic refresh of our F&B offerings to enhance visitor experience. Some refreshed F&B and retail experiences are set to open in the second half of 2025.



# Admissions

Purchase your Gallery Passes online or on-site from our self-service kiosks. Check out our latest promotions and rates at [nationalgallery.sg/admissions](https://nationalgallery.sg/admissions).



SCAN TO PURCHASE

GALLERY PASS TYPE	STANDARD	LOCAL*
<b>General Admission + Free Guided Tours</b> Admits one to these exhibitions: <ul style="list-style-type: none"> <li>▪ <i>Singapore Stories</i></li> <li>▪ <i>Between Declarations and Dreams</i></li> <li>▪ <i>Fernando Zóbel</i></li> <li>▪ <i>Diplomacy and Desire</i></li> </ul>	\$20	FREE
<b>Special Exhibition</b> Admits one to <i>City of Others</i>	\$25	\$15
<b>All Access</b> General Admission + Special Exhibition	\$30	REFER TO FOOTNOTE <sup>^</sup>

## FREE ADMISSION FOR:

- Gallery Insiders
- Children aged 6 and below
- Local/locally based students and teachers\*
- Persons with disabilities (PWD) and their caregivers

## CONCESSION AT \$5 OFF FOR:

- Children aged 7–12
- Seniors aged 60 and above
- Full-time National Servicemen (NSFs) excluding foreign personnel
- Overseas students and teachers\*

\* Rate for locals apply to Singapore Citizens and Permanent Residents.

<sup>^</sup> For locals, purchasing a Special Exhibition pass automatically upgrades you to an All Access pass, granting entry to all galleries.

# From qualifying institutions only. Valid identification is required.

## FREE AND EASY ART ENCOUNTERS FOR ALL

No Gallery Pass is required for:



- **City Hall Wing, Level B1, The Ngee Ann Kongsi Concourse Gallery**  
 Dalam Collection: *Where Ink Tides Meet*
- **City Hall Wing, Level 1, Keppel Centre for Art Education**
- **City Hall Wing, Level 4, ArchiGallery**  
*Listening to Architecture: The Gallery's Histories and Transformations*
- **City Hall Wing, Level 5, Ng Teng Fong Roof Garden Gallery**  
 Ng Teng Fong Roof Garden Commission: *GLISTEN* by Lisa Reihana
- **City Hall Wing, Level 6, Padang and Coleman Deck**
- **Supreme Court Wing, Level 3, Chief Justice's Chamber & Office**  
*Laws of Our Land: Foundations of a New Nation*
- **Gallery Children's Biennale 2025, multiple locations**

# Membership

Enjoy admission privileges, free parking and discounts on dining and shopping. Join a community of art enthusiasts and elevate your art experience.



SCAN TO SIGN UP

Membership Type	EXPLORER	INSIDER
		
	FREE	STANDARD: \$35 / \$30 <sup>^</sup> LOCAL*: \$20 / \$15 <sup>^</sup>

Over **\$100** worth of vouchers upon sign-up!

Free parking daily	1 hour	2 hours
Stay updated on seasonal offers	✓	✓
Unlimited free access to all exhibitions		✓
Pre-opening and after hours exhibition viewing		✓
Members-only events		✓
Shopping and dining discounts		Up to 20%
Early bird access to exclusive offers		✓
Earn points and redeem for rewards		✓

To find out more, please email [membership@nationalgallery.sg](mailto:membership@nationalgallery.sg).

\* Rate for locals apply to Singapore Citizens and Permanent Residents.

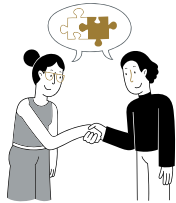
<sup>^</sup> Concessions are available for students, children aged 7–12 and seniors aged 60 and above. Offers are accurate at time of print.

# Support the Gallery

As a registered Charity and an Institute of Public Character, National Gallery Singapore relies on your support to build collections, engage in research, develop programmes and bring art to everyone.



SCAN TO  
DONATE



## Be our Corporate Partner

Corporates can support us as an Exhibition or Programme Partner. The Gallery offers bespoke partnership opportunities to increase brand awareness while giving back to the community as well as engaging clients with unique art experiences.



## Community, Education and Exhibition Partnerships

Generate new knowledge in the visual arts and engage underserved communities with impactful programmes. Help champion a thoughtful, creative and inclusive society.



## Adopt an Artwork

Adopting artworks from our collection will help us acquire new artworks that strengthen the narrative of Southeast Asian art history. You can also collectively adopt an artwork with fellow art enthusiasts from \$50 via [Adopt Now].



## Donate a Work of Art

Join other forward-thinking donors and gift an artwork, helping us to build a significant national collection, enrich our cultural heritage and ensure its enduring legacy for future generations.



## Make a Bequest

Celebrate a loved one by donating in memory of them or consider leaving a legacy gift to the Gallery in your will. Your generosity will be appreciated for generations to come.

## BE OUR PATRON

Be part of an art-loving community and enjoy exclusive privileges including tours, experiences and behind-the-scenes access.



SCAN TO BE A  
PATRON TODAY



National Gallery Singapore would like to thank our corporate partners for their generous support.

Development Partner



Founding Partners



Partner



Supported by



For details on partnership opportunities, please visit [nationalgallery.sg/join-give/support-the-gallery](https://nationalgallery.sg/join-give/support-the-gallery) or contact us at [SupportUs@nationalgallery.sg](mailto:SupportUs@nationalgallery.sg).

All gifts made are eligible for tax deductions in accordance with IRAS guidelines.

[nationalgallery.sg](http://nationalgallery.sg)

6271 7000

[info@nationalgallery.sg](mailto:info@nationalgallery.sg)

1 St Andrew's Road  
Singapore 178957

Daily 10am–7pm



NationalGallerySingapore



NatGallerySG



新加坡国家美术馆

Copyright in the content in this brochure may also reside in persons and entities other than, and in addition to, the Gallery. The Gallery seeks to share our artworks with as many people as we can. We are fully committed to respecting the intellectual property rights of others and always use our best efforts to obtain permission for artwork images used. Please contact us should you have any queries about this. Unless otherwise mentioned, all artwork images have been provided through the courtesy of National Heritage Board, Singapore and artworks featured are from the collection of National Gallery Singapore. The Gallery Guide is published by National Gallery Singapore. All rights reserved. Materials in this publication may not be reproduced in part or in whole without written consent of the Gallery. Every effort has been made to ensure the accuracy of information within this publication. However, changes are sometimes unavoidable and the Gallery reserves the right to make modifications to the programmes and ticketing policy without prior notice. Please visit [nationalgallery.sg](http://nationalgallery.sg) for the most updated information. The views and opinions expressed by speakers, facilitators and docents at the workshops and tours do not necessarily represent the position of the Gallery. Published in March 2025. All information is correct at time of print.

**PLEASE RETURN THIS BROCHURE FOR RECYCLING**