

For immediate release

Media Release

Strong Support for National Gallery Singapore's Art Adoption and Acquisition Programme

Singapore, 22 February 2016 – National Gallery Singapore today announced the launch of its Art Adoption and Acquisition Programme, an initiative that will strengthen the National Collection, deepen research and scholarship, and enhance its mission to showcase art from Singapore and Southeast Asia to the world.

To date, the Art Adoption and Acquisition Programme has garnered approximately S\$9 million in donations from organisations and individuals including Yong Hon Kong Foundation, Lam Soon Cannery, BinjaiTree, and Emma and Joseph Cherian.

“National Gallery Singapore is very encouraged by individuals and organisations who have supported us in making art accessible, and the Art Adoption and Acquisition Programme recognises their generosity and passion for art,” said Mr Kola Luu, Director, Business & Corporate Strategic Development Group, National Gallery Singapore.

“We are deeply grateful to them for joining us in growing our national collection for future generations, and in raising stronger public awareness of Southeast Asian art.”

Through this programme, donors can make a cash donation to adopt an artwork from the National Gallery Collection or to support the general mission of the Gallery.

The adopted artworks are currently on display as part of the Gallery's long-term exhibition, *Between Declarations And Dreams: Art of Southeast Asia since the 19th Century* at the UOB Southeast Asia Gallery and in *Siapa Nama Kamu?: Art in Singapore since the 19th Century* at the DBS Singapore Gallery.

For more information about the artworks, please visit www.nationalgallery.sg

- End -

DONOR QUOTES

"Art is an area that has been overlooked in the past in terms of how it can improve the quality of our lives. I am glad that National Gallery Singapore is taking on the responsibility to strengthen our art consciousness. I hope that more people will find it meaningful to gain deeper insights into our region's art histories via the iconic artworks displayed at the Gallery" – **Mr Danny Yong, Founder, Yong Hon Kong Foundation**

"Lam Soon has been active in many CSR initiatives. These include support for the arts of the region. We are honoured to be part of this Art Adoption programme to promote art appreciation among the Singaporeans." - **Mr Whang Shang Ying, Executive Director, Lam Soon**

"My late father was an ardent supporter of local and Malayan artists and he found great joy in helping them. Latiff Mohidin is a fine example of an artist whose works are greatly admired here and across the Causeway." – **Mr Hsieh Fu Hua, Founder, BinjaiTree**

ABOUT NATIONAL GALLERY SINGAPORE

National Gallery Singapore is a new visual arts institution which oversees the largest public collection of modern art of Singapore and Southeast Asia. The Gallery is dedicated to collaborative research, education and exhibitions, highlighting the importance of modern art in Southeast Asia in a global context. The Gallery also provides a unique visitor experience through its art presentations and innovative programming, positioning Singapore as a regional and international hub for the visual arts.

Situated in the heart of the Civic District, the National Gallery Singapore has been beautifully restored and transformed from the former Supreme Court and City Hall buildings – two important heritage buildings of Singapore's nationhood – into an exciting new visual arts venue. Opened in November 2015, the Gallery will be a leading civic and cultural destination established for the enrichment, enjoyment and engagement of Singapore residents and visitors from all over the world. Information on the National Gallery is available at www.nationalgallery.sg.

ABOUT LAM SOON CANNERY PTE LTD

Lam Soon Cannery, incorporated in 1950 in Singapore, is the parent company for its various business activities in the region.

A household name in South East Asia, Lam Soon is known for its quality branded consumer products. The Group has operations in Singapore, Malaysia, Thailand and Vietnam.

ABOUT BINJAITREE

Founded in 2009, BinjaiTree is a private charity that provides grants and support in terms of funds to a range of individuals and organisations that are aligned with its mission of giving back to the community.

With a core belief that money is only a facet of the larger scope of giving meaningfully to the community, BinjaiTree sees itself as a strategic partner contributing in other ways alongside its beneficiaries.

For media enquiries, please contact:

Beverly Tan

Burson-Marsteller for National Gallery Singapore

Tel: 6671 3277

Email: beverly.tan@bm.com

Elaine Sng

National Gallery Singapore

Tel: 6697 9207

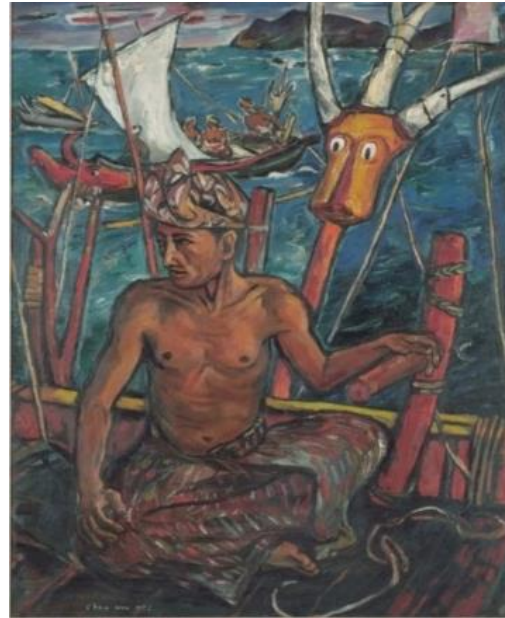
Email: elaine.sng@nationalgallery.sg

Annex

Some artworks available for adoption in the Art Adoption and Acquisition Programme:



Juan Luna
España y Filipinas
1884, Philippines
Oil on canvas
229.5x79.5 cm



Chen Wen Hsi
The Ferry
c. 1952
Oil on canvas
112.6x85.2 cm



Raden Saleh
Wounded Lion
c. 1839, Indonesia
Oil on canvas
88x108.5 cm



S. Sudjojono
Kami Present, Ibu Pertiwi
(Stand Guard for our Motherland)
1965, Indonesia
Oil on canvas
176x300 cm