

For immediate release

Media Release

**National Gallery Singapore Opens Groundbreaking International
Co-Curated Exhibition with Centre Pompidou, Paris**

*Reframing Modernism to offer fresh perspectives about
Modern Art from Southeast Asia, Europe and beyond*

Singapore, 28 March 2016 – National Gallery Singapore today announced the launch of its first international special exhibition, *Reframing Modernism*, co-curated and co-presented with Centre Pompidou, Paris. This landmark exhibition is the inaugural exhibition at the Singtel Special Exhibition Gallery. *Reframing Modernism* will showcase more than 200 works from about 50 artists, with approximately half from Centre Pompidou, and the other half from Southeast Asia. This will also be the first time that an exhibition displays significant Southeast Asian and European artists in parallel through its study of one of the most influential artistic and intellectual drives of the 20th century – modernism – from the perspective of Southeast Asia.

Reframing Modernism challenges the existing paradigm of how modernist painting is presented. It brings to light previously unexplored perspectives which enrich the overall discourse. Taking a comparative approach, the exhibition reveals shared concerns between the artists and their bodies of work to create a new and different narrative of modernism.

Throughout the exhibition, visitors are invited to draw their own connections and conclusions about the history of modernism and its relevance to the development of art in Southeast Asia. The unprecedented presentation includes works by Southeast Asian artists such as Le Pho (Vietnam), Nguyen Gia Tri (Vietnam), S Sudjojono (Indonesia), Affandi (Indonesia), Latiff Mohidin (Malaysia), Galo B Ocampo (Philippines), Georgette Chen (Singapore) and Tang Chang (Thailand), as well as European masters Vassily

Kandinsky, Fernand Léger, Marc Chagall, Jean Dubuffet, Pablo Picasso and Henri Matisse.

“We are pleased to work with Centre Pompidou to develop this exhibition which re-examines the paradigm of Modernism. This is the first time in Singapore that visitors can view artworks from European and Southeast Asian masters in the same space. We hope the exhibition will inspire fresh and interesting perspectives of the received understanding of modernism and modern art,” said Dr Eugene Tan, Director at National Gallery Singapore. “Along with the Gallery’s long-term exhibitions, *Reframing Modernism* will reinforce our aim to further the understanding of modern art from Singapore and Southeast Asia within a global context,” he added.

Reframing Modernism is co-curated by National Gallery Singapore Director Dr Eugene Tan, Senior Curator Lisa Horikawa and Curator Dr Phoebe Scott, together with the Deputy Director of Centre Pompidou’s National Museum of Modern Art – Industrial Design Centre, Catherine David and Curator Dr Nicolas Liucci-Goutnikov.

“*Reframing Modernism* testifies to the Centre Pompidou’s international reach and its pursuit of collaborations with prestigious partner institutions around the globe. Our collaboration with National Gallery Singapore on this unique project has been a most fruitful one and this co-curated exhibition is an excellent opportunity for us to learn more about modern Southeast Asian art and how modernism was perceived in this part of the world. The collaboration also gives art lovers in Singapore and Asia the opportunity to view major artworks from the Centre Pompidou, which houses one of the world’s two largest modern and contemporary art collections,” said Serge Lasvignes, President of the Centre Pompidou.

Reframing Modernism is showcased in the Singtel Special Exhibition Gallery, which consists of three galleries, spanning across a total floor area of approximately 20,000 square feet. This was made possible by Singtel’s \$20 million contribution last year to the National Gallery Singapore.

Ms Chua Sock Koong, Singtel Group CEO said, “We are excited that our contribution to National Gallery Singapore will enable Singaporeans to enjoy both iconic masterpieces from around the world alongside equally accomplished Southeast Asian art that we are proud to champion. We congratulate National Gallery Singapore and Centre Pompidou on

their first-ever collaboration. Art is for everyone and we hope this will reach as many people as possible.”

Reframing Modernism will run from 31 March until 17 July 2016 at the Singtel Special Exhibition Gallery, located on level 3 of the City Hall Wing at the National Gallery Singapore. Admission into *Reframing Modernism* is chargeable at \$15 and \$25 for Singaporeans and Non-Singaporeans respectively. Concessions apply. The exhibition will open from 10am to 7pm from Monday to Thursday, and Sunday and public holidays, from 10am to 10pm from Friday to Saturday, and the eve of public holidays.

For artwork highlights, please refer to Annex A.

For more information on the exhibition and ticket details, visit

www.nationalgallery.sg/reframing-modernism

- End -

ABOUT NATIONAL GALLERY SINGAPORE

National Gallery Singapore is a new visual arts institution which oversees the largest public collection of modern art of Singapore and Southeast Asia. The Gallery is dedicated to collaborative research, education and exhibitions, highlighting the importance of modern art in Southeast Asia in a global context. The Gallery also provides a unique visitor experience through its art presentations and innovative programming, positioning Singapore as a regional and international hub for the visual arts.

Situated in the heart of the Civic District, the National Gallery Singapore has been beautifully restored and transformed from the former Supreme Court and City Hall buildings – two important heritage buildings of Singapore’s nationhood – into an exciting new visual arts venue. Opened in November 2015, the Gallery will be a leading civic and cultural destination established for the enrichment, enjoyment and engagement of Singapore residents and visitors from all over the world. Information on the National Gallery is available at www.nationalgallery.sg.

ABOUT CENTRE POMPIDOU, PARIS

Located in the heart of Paris, in one of the 20th century’s most iconic buildings, the Centre Pompidou attracts around 5 million visitors per year in all of its spaces, including over 3.5 million visits to its museum and exhibitions. The Centre Pompidou was inaugurated in 1977 and brings together under a single roof one of the world’s two most important collections of modern and contemporary art, comprising over 120,000 works of art, a public library (the Bibliothèque publique

d'information), a musical and acoustic research institute (Ircam), halls for live arts, cinema screenings and lectures as well as spaces dedicated exclusively to younger audiences. Every year, the Centre Pompidou organises over twenty temporary exhibitions.

For media enquiries, please contact:

Beverly Tan

Burson-Marsteller for National Gallery Singapore

Tel: 6671 3277

Email: beverly.tan@bm.com

Lum Xin Mun

Tel: 6697 9120

Email: xinmun.lum@nationalgallery.sg

Melissa Chow

Tel: 6697 9138

Email: melissa.chow@nationalgallery.sg

[ANNEX A]

This exhibition presents artists through small bodies of work, drawn from critical periods in their practice. These bodies of work were used as a starting point for drawing connections based on common approaches to modernism, common ways of working and common conceptual orientations, between the different artists from Europe, Southeast Asia and beyond.

Highlights from *Reframing Modernism*

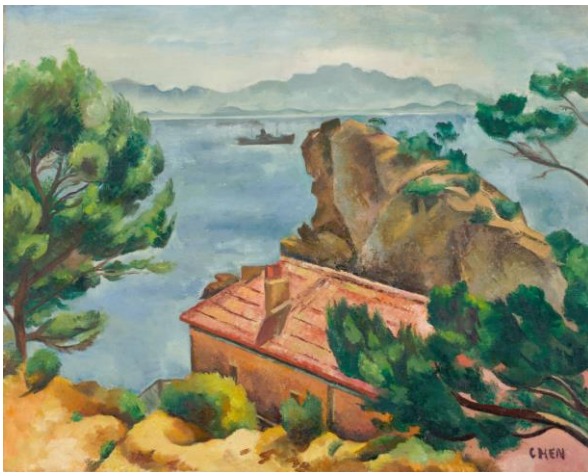


Le Pho

Harmonie Verte: Les Deux Sœurs
(*Harmony in Green: The Two Sisters*)

c. 1938
54 x 45 cm
Gouache on silk

Collection of National Gallery Singapore
Image courtesy of National Heritage Board



Georgette Chen Landscape

c. 1930s
Oil on canvas
65 x 81 cm

Collection of Centre Pompidou, Paris,
MNAM-CCI
© Dr Lee Seng Gee
Photo: © Centre Pompidou, MNAM-CCI/Jim Purcell/Dist. RMN-GP



Galo B Ocampo
Brown Madonna

1938
Oil on canvas
62 x 46.5cm

Collection of University of Santo Tomas
Museum, Manila



Vassily Kandinsky
Impression V (Park)

1911
Oil on canvas
106 x 157.5 cm

Donated by Mme Nina Kandinsky, 1976

Collection of Centre Pompidou, Paris,
MNAM-CCI

Photo: © Centre Pompidou, MNAM-CCI/Bertrand Prévost/Dist. RMN-GP



Sompot Upa-in
Politician

1958
Oil on canvas
75 x 57 cm

Collection of Sompot Upa-In Estate



Robert Delaunay
Portrait of Madam Heim

c. 1926 – 1927
Oil on canvas
130 x 97 cm

Donated by Sonia and Charles Delaunay,
1964

Collection of Centre Pompidou, Paris,
MNAM-CCI
Photo: © Centre Pompidou, MNAM-
CCI/Bertrand Prévost/Dist. RMN-GP