



NATIONAL GALLERY SINGAPORE

JAN-MAR
2025

GUIDE + MAP



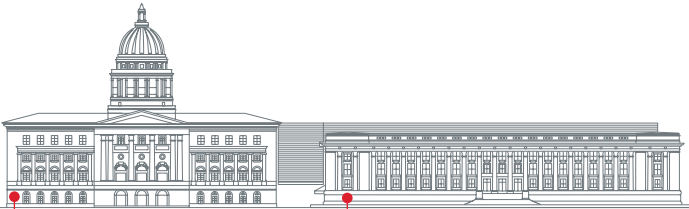
SCAN FOR
DIGITAL COPY

LET *Art* SURPRISE YOU



Welcome to National Gallery Singapore

National Gallery Singapore is a leading visual arts institution which oversees the world's largest collection of Southeast Asian modern and contemporary art. Situated at the birthplace of modern Singapore, in the heart of the Civic District, the Gallery is housed in two national monuments—City Hall and the former Supreme Court—that have been beautifully restored and transformed into this exciting 64,000-square-metre venue.



SUPREME COURT WING

- **Level 1:** *Angin Cloud* by Art Labour
- **Levels 3–5:** UOB Southeast Asia Gallery: *Between Declarations & Dreams: Art of Southeast Asia Since the 19th Century*
- **Level 3:** *Dalam Southeast Asia: Figuring a Scene*
- **Level 3:** *Laws of Our Land: Foundations of a New Nation*

CITY HALL WING

- **Level 2:** DBS Singapore Gallery: *Singapore Stories: Pathways and Detours in Art* (partially open for revamp, fully open in Jul 2025)
- **Level 3:** *Kim Lim: The Space Between. A Retrospective* (Closing 2 Feb 2025)
- **Levels 3 and B1:** *Teo Eng Seng: We're Happy. Are You Happy?* (Closing 2 Feb 2025)
- **Level 4:** *Becoming Lim Tze Peng* (Closing 23 Mar 2025)
- **Level 5:** Ng Teng Fong Roof Garden Commission: *GLISTEN* by Lisa Reihana

Need a guide?



Looking for an itinerary to guide your visit? Select from a range of Self-Guided Tours—whether you are visiting for the first time, looking for a tour of our iconic masterpieces or just here for the 'gram, there is something for everyone!



SCAN TO TRY

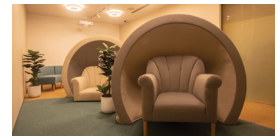
AN ACCESSIBLE EXPERIENCE FOR ALL

The Gallery is committed to creating an inclusive experience that can be enjoyed by visitors with access needs.



SCAN FOR ACCESS GUIDE

Located at City Hall Wing, Level B1, the **Calm Room** is a dedicated space where visitors can rest if they are feeling overstimulated or overwhelmed by their environment.



FREE WI-FI

Connect to our free visitor Wi-Fi: **"Gallery Visitors"**

PHOTOGRAPHY & RECORDINGS

Please note that photographs, video and audio recordings may be taken in and around our premises from time to time. By entering the Gallery, you consent to having any photographs or recordings taken of you used by the Gallery for publishing, marketing and other purposes. Please approach our Gallery staff should you have any concerns.

LEGEND

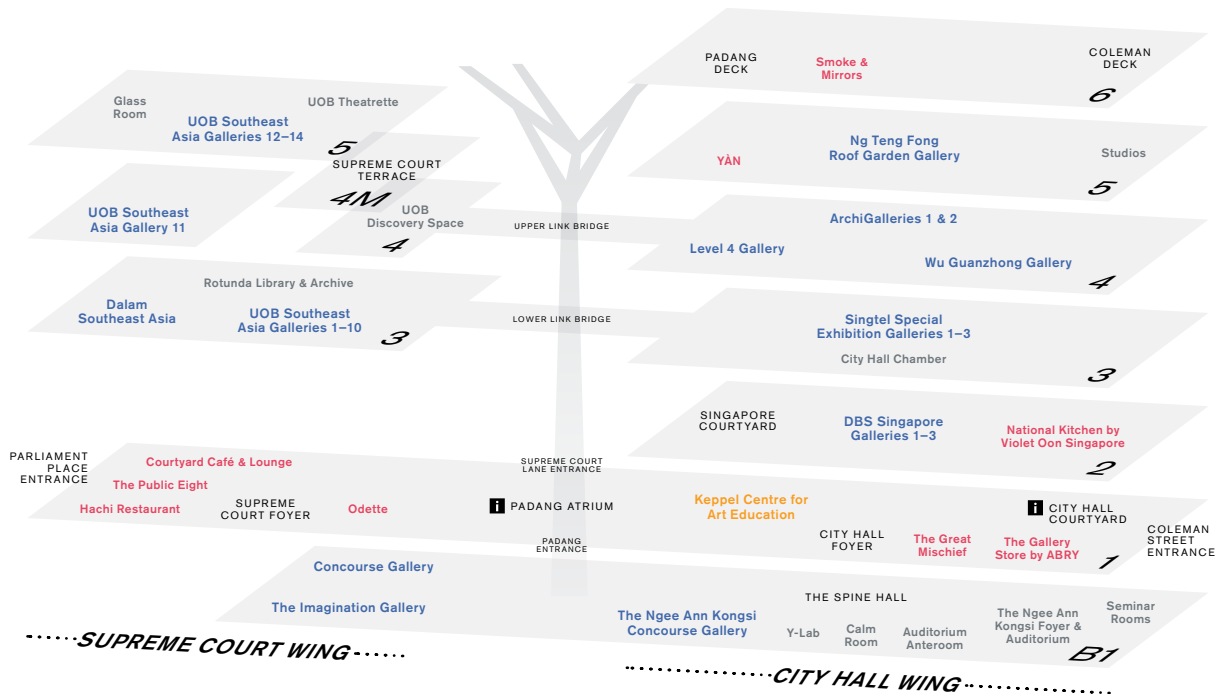
- Galleries
- Education
- Shop & Dine
- Museum Services and Special Facilities
- MUSEUM SPACES

i Available at Visitor Services

Level 1 Padang Atrium and
Level 1 City Hall Courtyard

- Gallery Passes
- Tours
- Lost & Found

Carparks at City Hall Wing,
Levels B2 and B3 accessible
via Lift Lobbies A and B only



Must-Sees!

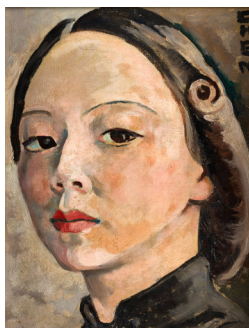


Raden Saleh's *Boschbrand (Forest Fire)*

- Supreme Court Wing, Level 3,
UOB Southeast Asia Gallery 2

This monumental painting depicts wild animals chased by flames in a dense, elaborate composition. A year after it was gifted to his patron King Willem III of the Netherlands, Raden Saleh was awarded the title of "King's Painter."

This work has been adopted by Yong Hon Kong Foundation.



Georgette Chen's
Self Portrait

- City Hall Wing, Level 2,
DBS Singapore Gallery 1

Perhaps the most famous image of Georgette Chen, her gaze in this painting meets that of the viewer, firmly establishing her presence and encapsulating her dedication to presenting herself as a professional artist.

Gift of Lee Foundation.

SELF-GUIDED TOUR

Catch eight iconic
and historically
significant artworks
on our must-see list!

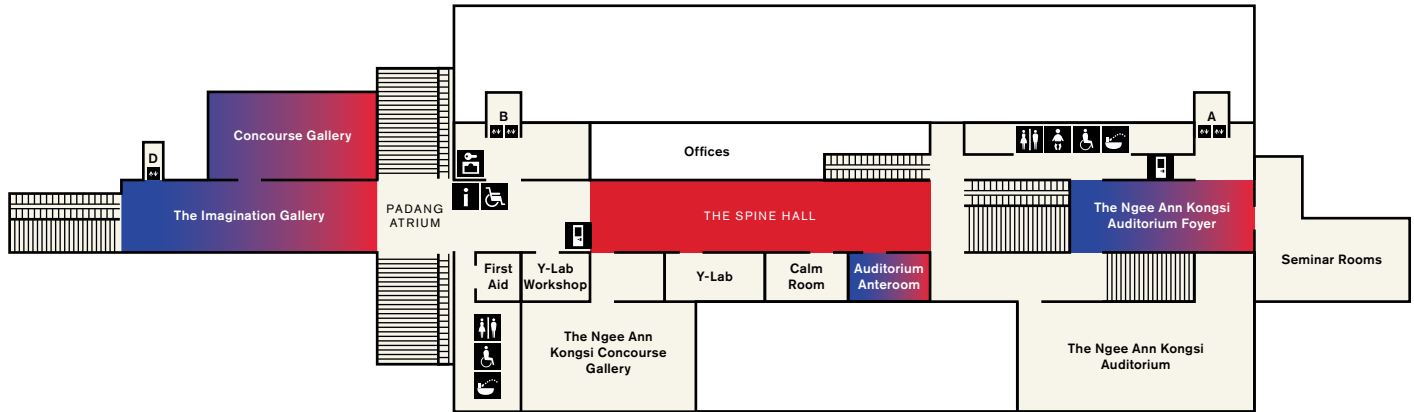


SCAN TO
TRY NOW



For the latest information on
our exhibitions and festivals,
scan the QR code to visit
nationalgallery.sg/whats-on.





..... SUPREME COURT WING

..... CITY HALL WING



Teo Eng Seng: We're Happy. Are You Happy?

City Hall Wing, Level 3, Singtel Special Exhibition Gallery 1 and Level B1, The Spine Hall

Teo Eng Seng + Kim Lim
Combined Tour
English Thu–Sun 3.30pm
Mandarin Sat–Sun 1.30pm



**CLOSES
2 FEB**

Check out *Ah Wah and Ah Kiat: Crossing Borders* (2001) at The Spine Hall. Here, 200 concrete figurines mounted on motorcycles have been arranged together, depicting the daily commute workers make across the Johor-Singapore Causeway. Amidst the hundreds of concrete figurines lie two gold ones, breaking up the monotony of the scene.

The main exhibition is located on Level 3.

The Singtel Special Exhibition Gallery is made possible with the support of Singtel.

LEAD PARTNER

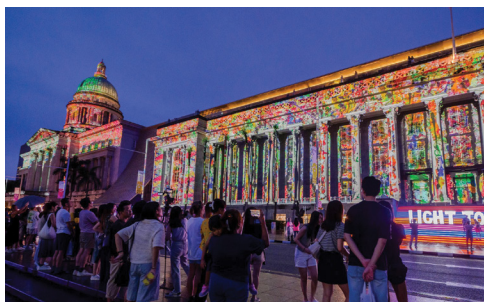
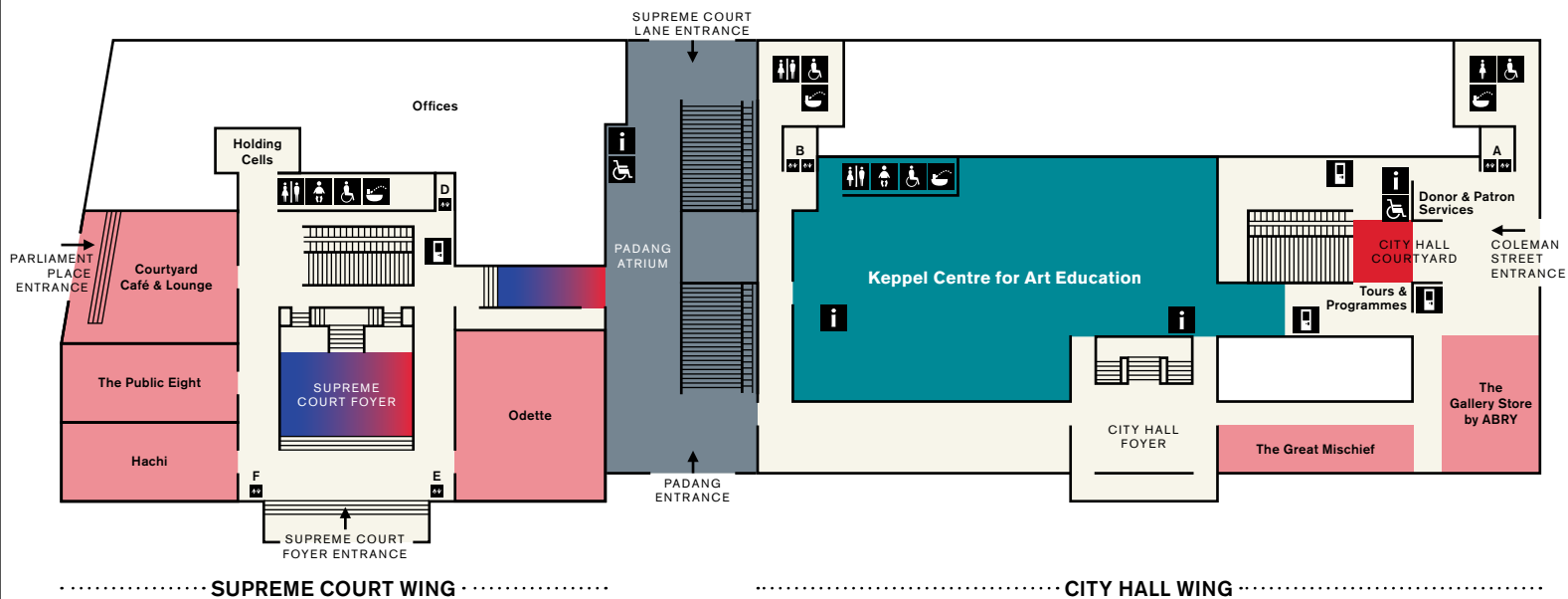


**TICKETED
EXPERIENCE**

Scarce City

Supreme Court Wing, Level B1, Concourse Gallery and The Imagination Gallery

Opening on 17 January 2025, Scarce City is an interactive Arts x Tech experience that fuses serious games and immersive theatre to explore the psychology behind climate change and what it means to have enough.



Light to Night Singapore 2025:
Do You See Me?

Various locations around the Civic District and within the Gallery

Light to Night Singapore returns from **17 January to 6 February 2025**, illuminating the Civic District with mesmerising light projections, art installations and engaging programmes! With this year's theme "Do You See Me?", everyone is invited to uncover unexpected ways of seeing ourselves and others, and to be inspired for the future.

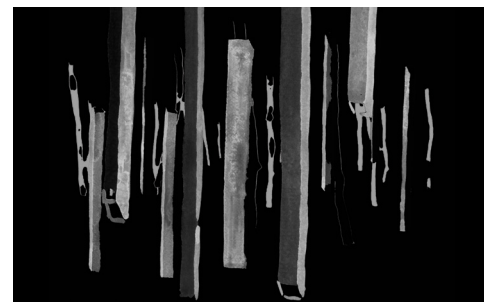


Keppel Centre for Art Education

City Hall Wing, Level 1

The Keppel Centre for Art Education aims to foster lifelong love for art in children with a fun learning experience for the entire family to enjoy. Inspired by the theme of **Art & Wonder**, the Centre features seven learning zones, with stimulating and interactive experiences for children aged 4 to 12 to learn about art through play.

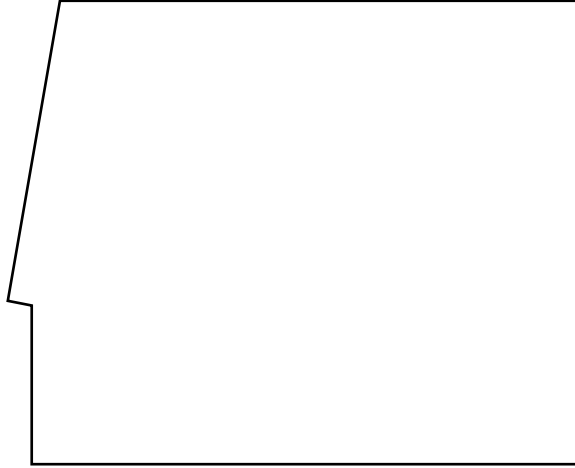
The Gallery is grateful to Keppel for their generous support in making the Keppel Centre for Art Education possible.



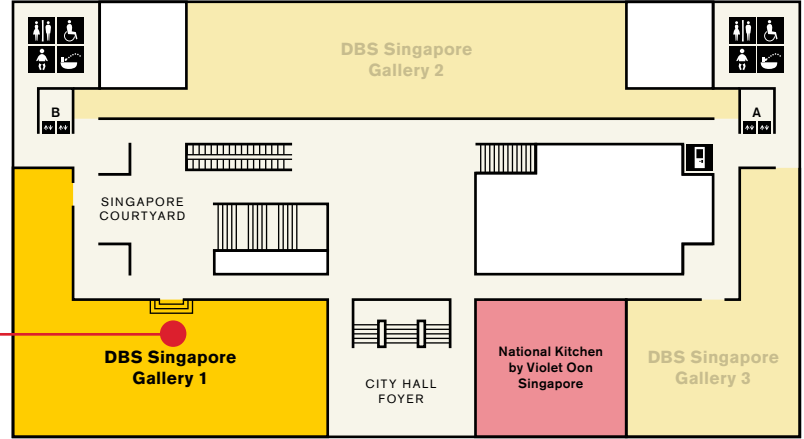
OUTBOUND: Angin Cloud by Art Labour

Level 1, Padang Atrium

Angin Cloud, part of the Gallery's OUTBOUND series, imagines the rural industrialisation of a hill side from Vietnam's Central Highlands. Pairing Jrai wood sculptures and suspended fibreglass pillars that recall farming structures for growing pepper vine, the installation references 'angin', a Jrai concept for the dynamic potential for change found in water and air.

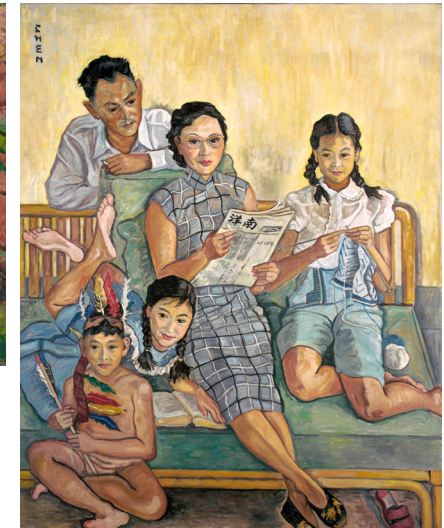


MUST-SEE!
Georgette Chen's
Self Portrait



..... SUPREME COURT WING

..... CITY HALL WING



Singapore Stories: Pathways and Detours in Art

City Hall Wing, Level 2,
DBS Singapore Gallery*

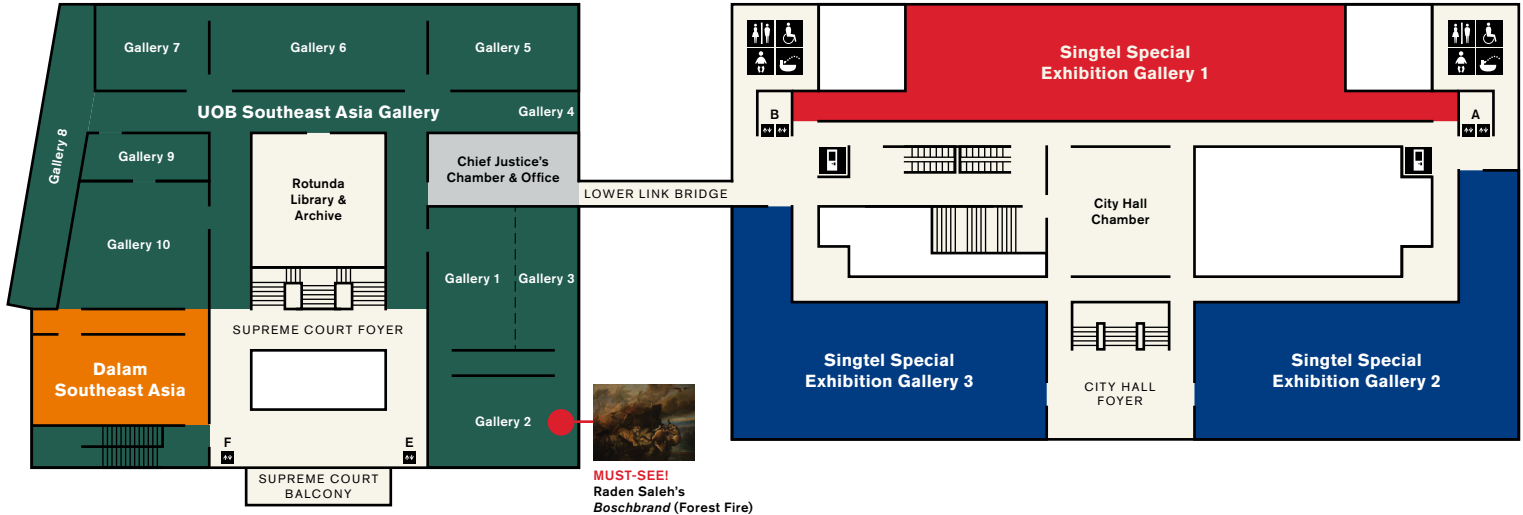
*Galleries 2 and 3 will re-open
in Jul 2025.

This new exhibition presents a layered, ever-changing story of Singapore's art history, continually questioning itself: Whose story is this? Where is home? What is new? Who is looking? What is art for? See iconic artworks from the 19th century to present by artists from diverse communities, identities and subject areas, including artists such as Georgette Chen, Liu Kang and more.

NEW!

DBS Singapore Gallery
 Highlights Tour
 English Thu–Sun 3.30pm
 Mandarin Sat–Sun 2.30pm

The DBS Singapore Gallery is made possible with the support of DBS Bank.



..... SUPREME COURT WING

..... CITY HALL WING



Kim Lim: The Space Between. A Retrospective

City Hall Wing, Level 3, Singtel Special Exhibition Galleries 2 and 3

Teo Eng Seng + Kim Lim
Combined Tour
English Thu–Sun 3.30pm
Mandarin Sat–Sun 1.30pm

Kim Lim: The Space Between. A Retrospective Curator Tour
Sat 25 Jan | 11am

Kim Lim: The Space Between. A Retrospective invites you to uncover Lim's artistic journey through sculptures, prints, maquettes, never-before-seen photographs and archival materials. Discover the evolution of her artistry across four decades. Come and experience her quiet brilliance before the show ends.

The Singtel Special Exhibition Gallery is made possible with the support of Singtel.

LEAD PARTNER



CLOSES
2 FEB



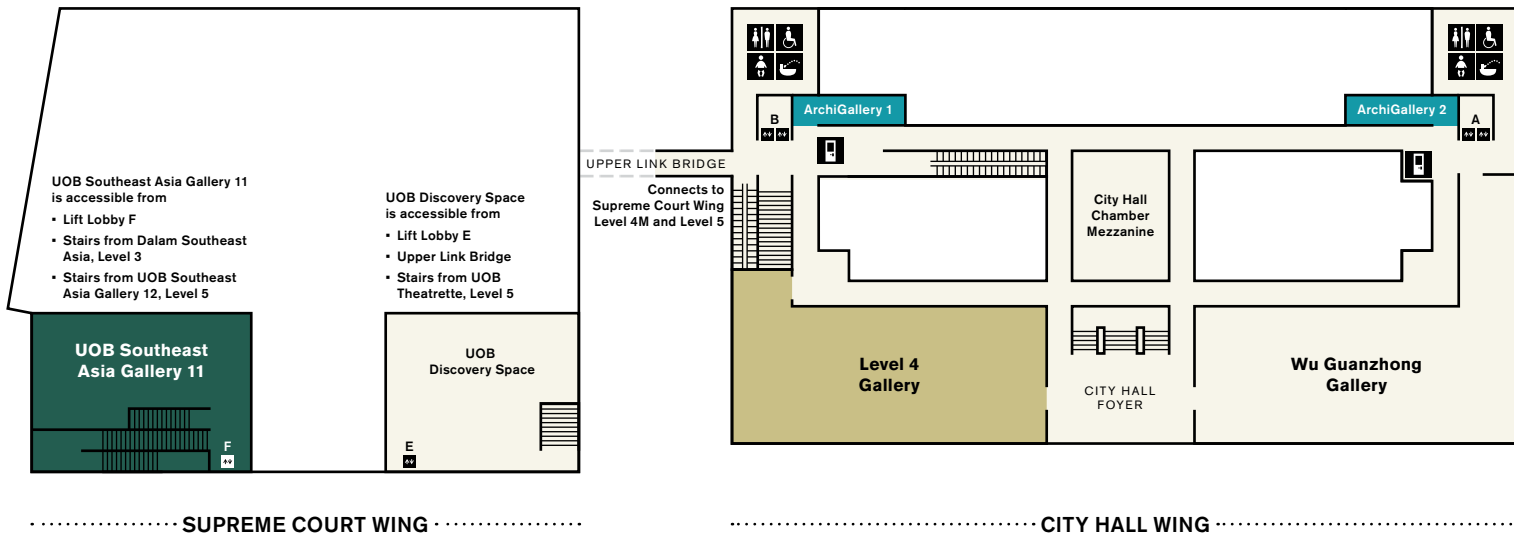
CLOSES
2 FEB

Teo Eng Seng: We're Happy. Are You Happy?

City Hall Wing, Level 3, Singtel Special Exhibition Gallery 1 and Level B1, The Spine Hall

Teo Eng Seng's practice eschews conventional ways of thinking about and making art while staying relevant to local and global issues. By asking "We're Happy. Are You Happy?" the exhibition invites you to explore Teo's honest and witty negotiation between self and society.

The exhibition continues on Level B1.



Becoming Lim Tze Peng

City Hall Wing, Level 4, Level 4 Gallery

Becoming Lim Tze Peng Highlights Tour

English Thu–Sun 11am
 Mandarin Sat–Sun 2pm

Becoming Lim Tze Peng Curator Tour

English Sat 8 Feb | 2pm
 Mandarin Sat 8 Feb | 11am

Explore the captivating journey of Lim Tze Peng, Singapore's oldest living artist, at the solo exhibition on the centenarian artist. Immerse yourself in the nostalgic scenes of early Singapore in Lim's well-loved paintings and see depictions of magnificent landscapes from his art expeditions in Southeast Asia and the world beyond. Discover the evolution of his ink journey, which includes the invention of his own distinct style of calligraphy, "hu tu zi".

MAJOR PARTNER Jazz Chong & Edmund Ng Architects

Listening to Architecture: The Gallery's Histories and Transformations

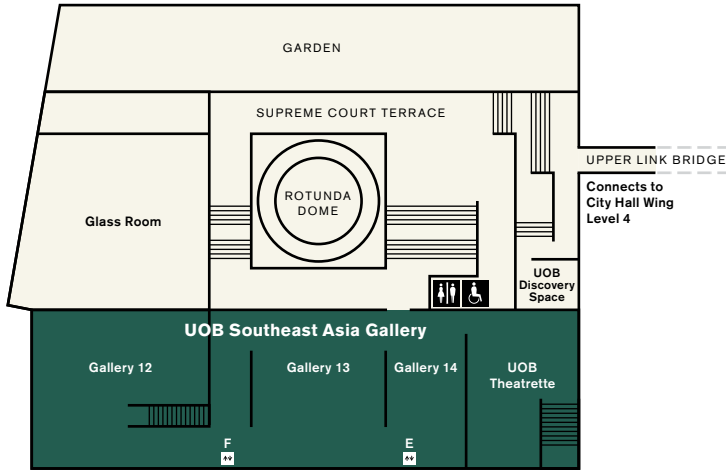
City Hall Wing, Level 4, ArchiGallery

Listening to Architecture traces the journey of the City Hall and former Supreme Court buildings through a multi-sensory immersive experience, from the origins of their sites to their dramatic transformation into National Gallery Singapore.

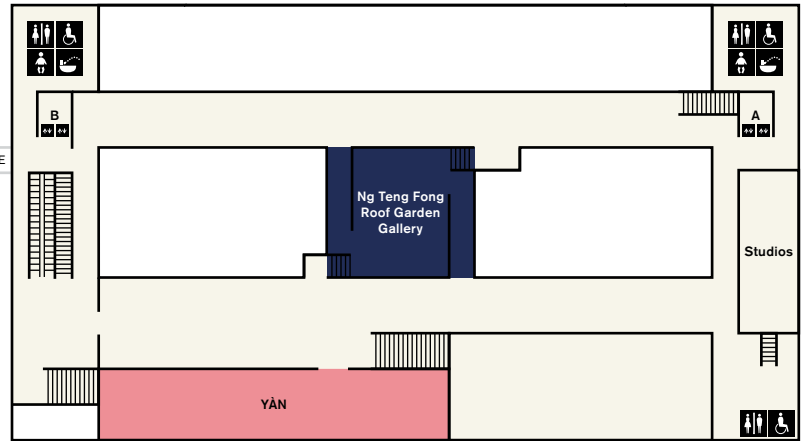
5 & 4M

Lift
 Restroom
 Baby changing room
 Accessible restroom
 Drinking fountain
 Self-service kiosk

Between Declarations and Dreams
GLISTEN by Lisa Reihana
Shop & Dine



..... SUPREME COURT WING



..... CITY HALL WING



Between Declarations and Dreams:
Art of Southeast Asia Since the 19th Century

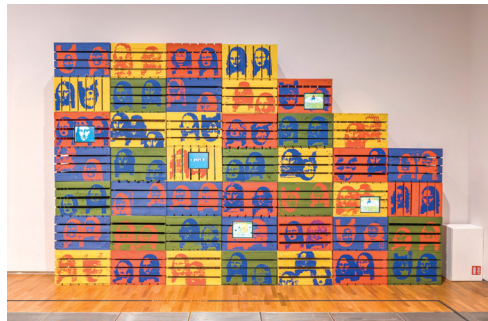
Supreme Court Wing,
Levels 3–5, UOB Southeast Asia Gallery

In this exhibition, Southeast Asian art history is characterised by a continuous encounter with the new, as the region's artists reinvented vernacular expressions and aesthetics.

See Apinan Poshyananda's pathbreaking video installation, *How to Explain Art to a Bangkok Cock* (above), in **UOB Southeast Asia Gallery 12**, as well as new displays in galleries 1, 2, 5, 9 and 11.

The UOB Southeast Asia Gallery is made possible with the support of UOB.

UOB Southeast Asia Gallery
Highlights Tour
 English Thu–Sun 2pm
 Mandarin Sat–Sun 4pm



Ng Teng Fong Roof Garden Commission:
GLISTEN by Lisa Reihana

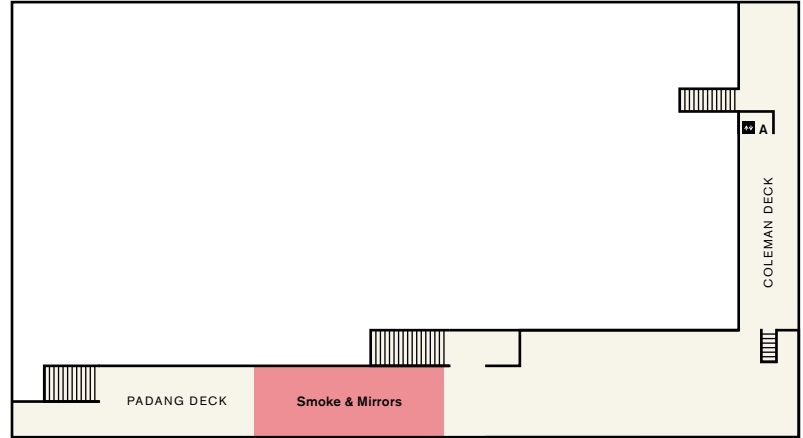
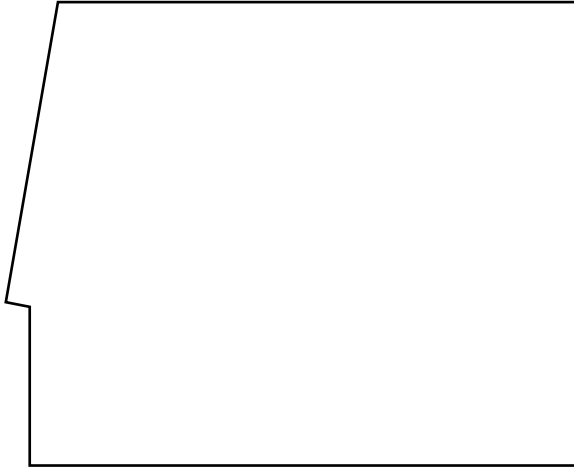
City Hall Wing, Level 5,
Ng Teng Fong Roof Garden Gallery

Be dazzled by the shimmering discs and soundscape of Aotearoa New Zealander contemporary artist Lisa Reihana's *GLISTEN*, a striking kinetic large-scale outdoor installation adorned with patterns inspired by Southeast Asian Songket and Māori Tāniko weaving.

SERIES PARTNER

Far East Organization

The Ng Teng Fong Roof Garden Commission series is made possible with the support of Far East Organization.



..... CITY HALL WING

GALLERY ETIQUETTE



Food and drinks are not permitted in the galleries and public spaces.



No flash photography or videography in the galleries. The use of selfie sticks, tripods and lighting equipment is not permitted in the galleries.



Please do not touch the artworks. Even clean hands can damage surfaces.



Large bags and bulky items including umbrellas should be stored in lockers located at City Hall Wing, Level B1.



Children must be accompanied by an adult at all times in the Gallery.



Pencil sketching is permitted in the galleries with sketchbooks no larger than 22 × 28cm.



Charcoal, pastel, permanent markers, watercolour and oil paint are not permitted.

Image credits

Level 5 & 4M

(Middle) Apinan Poshyananda. *How to Explain Art to a Bangkok Cock*. 1985, reconstructed 2019. Painted crates and LCD monitors, 270 × 360 × 50 cm. Collection of National Gallery Singapore.

(Right) Lisa Reihana (Ngā Puhi, Ngāti Hine, Ngāi Tūteauru, Ngāi Tūpoto). *GLISTEN*. 2024. Steel frames, shimmer discs and wind chime.

Level 4

(Left) Lim Tze Peng. Detail of *Sumatra*. 1970. Oil on canvas, 76 × 102 cm. Gift of Mandarin Art Galleries Pte. Ltd. Collection of National Gallery Singapore.

(Middle) Lim Tze Peng. Detail of *Singapore River (Coleman Bridge)*. 1979. Ink and colour on paper, 68 × 139 cm. Istana Art Collection.

Level 3

(Right) Teo Eng Seng. Detail of *Multiplex*. c. 1992. Paperdyesculp applied to canvas strips used in a vertical blind system, 251 × 204 cm. Collection of National Gallery Singapore.

Level 2

(Left) Wee Kong Chai. Detail of *Storyteller*. 1962. Oil on canvas, 68.5 × 122 cm. Collection of National Gallery Singapore.

(Middle) Liu Kang. Detail of *Working At the Brick Factory*. 1954. Oil on canvas, 97.8 × 128.6 cm. Gift of the artist's family. Collection of National Gallery Singapore.

(Right) Georgette Chen. *Family Portrait*. c. 1954–1955. Oil on canvas, 161.5 × 130.2 cm. Gift of the artist's estate. Collection of National Gallery Singapore.

Level B1

(Middle) Teo Eng Seng. Detail of *Ah Wah and Ah Kiat: Crossing Borders*. 2001. Glass reinforced concrete, approximately 34 × 50 × 31 cm each, 202 pieces. Collection of National Gallery Singapore.

Must-Sees

(Left) Raden Saleh. Detail of *Boschbrand (Forest Fire)*. 1849. Oil on canvas, 300 × 396 cm. Collection of National Gallery Singapore. This work has been adopted by Yong Hon Kong Foundation.

(Middle) Georgette Chen. Detail of *Self Portrait*. c. 1946. Oil on canvas, 22.5 × 17.5 cm. Gift of Lee Foundation. Collection of National Gallery Singapore.

Tours

We're always adding new tours held in conjunction with ongoing exhibitions. Please check our website for the latest tour information.



SCAN FOR LATEST INFO



DAILY TOURS

Explore the rich history of our buildings and collections by joining one of our guided tours led by trained docents. Tours last approximately 60 minutes, unless stated otherwise.

To reserve a slot, proceed to our *Tours & Programmes counter (City Hall Wing, Level 1)* or *Visitor Services counter (Padang Atrium, Level 1)* at least 30 minutes before the tour starts. Limited slots are available on a first-come, first-served basis. Tour participants should purchase a pass before joining a tour, with the exception of the *Building Highlights Tour*, which does not require any passes.

BUILDING HIGHLIGHTS

English Thu–Sun 10.30am |
Mandarin Sat–Sun 11.30am |
FREE! No pass required,
on-site registration required

Learn more about the national monuments—City Hall and the former Supreme Court—which have stood witness to many of Singapore's historic moments, and the decade-long renovation that united and transformed these majestic buildings into a home for the arts.

HIGHLIGHTS OF THE GALLERY

English Mon–Fri 11am |
Mandarin Sat–Sun 11am |
Japanese 1st and 3rd Thu 1.30pm |
General Admission Pass required,
to be purchased separately

Get a glimpse of the best that the Gallery has to offer on this sweeping tour. Our docents will introduce you to key architectural features of our historic buildings, as well as selected masterpieces from our exhibitions on the art of Singapore and Southeast Asia.

Latest information on other various exhibition tours is available on the map and on our website.

FREE AUDIO TOURS

Download our Gallery Explorer app to enjoy in-depth audio commentaries.



SCAN TO GET THE APP



SPECIAL TOURS



BACK-OF-HOUSE TOUR:

“FORMER SUPREME COURT: UNSEEN, UNHEARD”

Sat 2.30pm, Sun 4.30pm | Standard \$40, Local \$25 |
Tickets include admission to General Admission exhibition spaces |
20% off for Gallery Insiders

This 90-minute tour offers a glimpse into restricted areas of the former Supreme Court, which are usually out of bounds to the public. Go behind the scenes and find out more about courtroom proceedings and the experience of persons on trial.

THE TOUR IS NOT SUITABLE FOR VISITORS BELOW THE AGE OF 13 AND VISITORS WITH LIMITED MOBILITY. PLEASE WEAR COMFORTABLE FOOTWEAR AND ATTIRE.

GROUP TOURS

We provide a variety of group tour options upon request. For more information, please email GroupEnquiries@nationalgallery.sg.

VENUE RENTAL & SHOOTS

Blending rich history with exciting modernity, the Gallery's unique and timeless spaces are ideal for hosting events and shooting memorable photos and videos. For more information, please visit nationalgallery.sg/venue-rental.

Activities

Special tours, art talks, workshops, film screenings and music performances are held regularly at the Gallery. Scan the QR code to sign up!



SCAN TO
SIGN UP



SCAN TO
WATCH

AT THE CONSERVATOR'S BENCH: CHEN WEN HSI'S *GIBBONS*

This video captures the intricate conservation process of pioneering local artist Chen Wen Hsi's treasured artwork *Gibbons*, honouring his creative legacy through one of his largest and most elaborate paintings featuring his iconic gibbon motif. Don't miss the chance to witness the meticulous efforts behind bringing this artwork to life, now on display for all to appreciate at the [DBS Singapore Gallery](#).



NEW
ONLINE
COURSE!



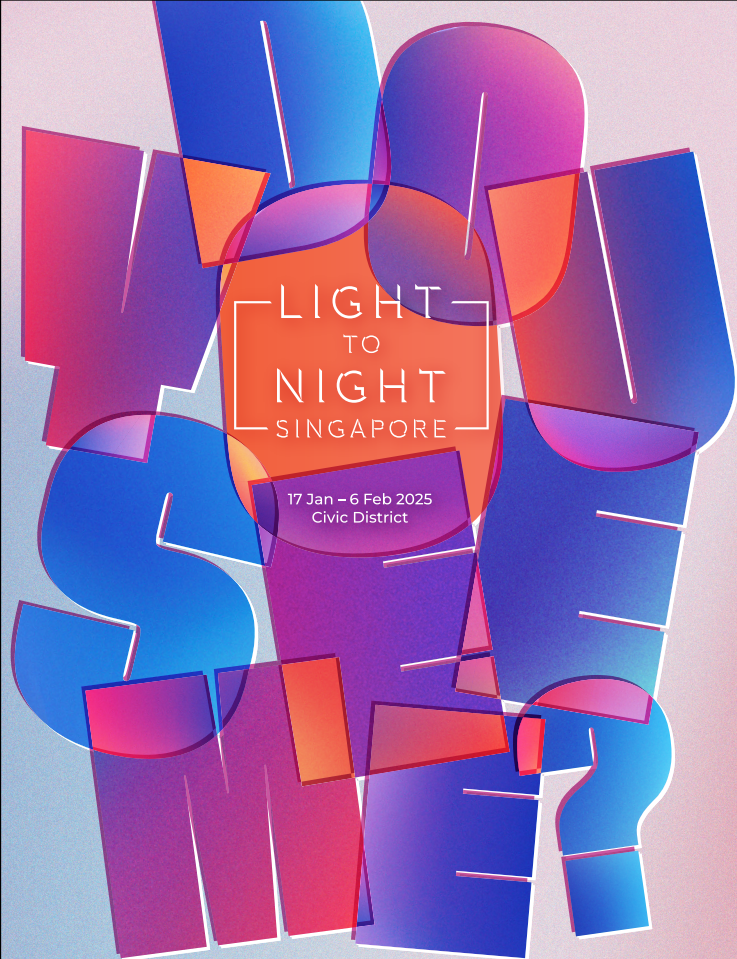
SCAN TO
SIGN UP

ART AND THE ENVIRONMENT IN SOUTHEAST ASIA: LANDSCAPE AS IDEOLOGY

Are these peacefully depicted landscapes fact or fiction? From romanticised 19th-century colonial representations to depictions of nations in development, join us in unearthing the relationship between landscape and art in our latest online course. Journey with experts as we examine how ideology shapes our perceptions of the land.

Connect with our curious global community and share your thoughts with fellow learners today!

Image credits:
(Top) Chen Wen Hsi. Detail of *Gibbons*. 1977. Ink and colour on paper, 190 x 488 cm. Conservation of this artwork was generously funded by the Bank of America Art Conservation Project. Collection of National Gallery Singapore.
(Bottom) John Turnbull Thomson. Detail of *Singapore*. 1851. Oil on canvas, 57.3 x 88 cm. Collection of National Gallery Singapore. This acquisition was made possible with donations to the Art Adoption & Acquisition Programme.



Free entry for all, with ticketed programmes | LightToNight.sg

Light to Night Singapore makes its annual return from **17 January to 6 February 2025**, illuminating the Civic District with mesmerising light projections, art installations and engaging programmes! With this year's theme "**Do You See Me?**", audiences of all ages are invited to uncover unexpected ways of seeing ourselves and others, and to be inspired for the future.

The festival will feature exciting programmes and artworks by local artists such as Cultural Medallion recipients Chng Seok Tin, Goh Beng Kwan and Han Sai Por. On festival weekends, gather with friends and family to enjoy a wide array of food and beverage options at the Art x Social Festival Street. Complete your experience with live music performances at the Padang Atrium.

Enjoy **extended access to all exhibitions until 11pm at the Gallery every Friday to Sunday** during the festival period. Don't miss your last chance to visit the solo exhibitions of Singaporean artists Teo Eng Seng, Kim Lim and Lim Tze Peng, presented as part of the Gallery's SG Artist series.

GalleryKids!

Enjoy programmes specially designed to develop curiosity, imagination and the appreciation of art in children. Scan the QR code for the latest programme information.



SCAN FOR
LATEST INFO

KIDS' PROGRAMMES AND ACTIVITIES

City Hall Wing, Level 1, Keppel Centre for Art Education

MONTHLY PROGRAMMES



GalleryToddlers!

Want to engage your toddler in the Gallery but don't know where to start? GalleryToddlers! invites children and parents to take part in sensory play inspired by different artworks each month!



Art Alive

Immerse yourself in the world of art and let your imagination soar! This monthly programme invites families to go on a fun and exciting journey of exploration, using drama and storytelling to bring artworks to life.

SCHOOL HOLIDAY PROGRAMMES



Let's Create!

Join an artist-led workshop that invites children to explore diverse art techniques and mediums and engage in creative activities, deepening their understanding of artworks in the Gallery.



ARTventure Camp

At our thematic ARTventure Camps, participants will dive into exciting hands-on activities, interactive gallery tours and fun collaborative projects—all designed to inspire creativity and imagination!



KEPPEL CENTRE FOR ART EDUCATION



City Hall Wing, Level 1 | Free Admission

A 21st-century centre for education within an art gallery, the Keppel Centre for Art Education aims to foster a lifelong love for art in children. The Centre first opened in 2015 and was the first dedicated art education facility of its kind in Singapore and the region, with spaces and programmes developed specially to help children develop curiosity through multisensory active learning and creative play. Art education plays a vital role in preparing our young for a future where critical and creative thinking is a necessary competency, and the Centre introduces children to art at an early age while acknowledging the importance of lifelong learning.

In December 2023, the Centre reopened with a brand new space inspired by the theme, **Art & Wonder**. An inspiring, fun and nurturing environment for children aged 4 to 12 years old, the new Centre features multiple educational zones in which families and children can experience the world of art through play and creative activities.

The Gallery is grateful to Keppel for their generous support in making the Keppel Centre for Art Education possible.

Shop & Dine

The Gallery has a suite of specially curated dining and retail spaces—including Michelin-starred restaurants—that offer a variety of cuisines and unique museum merchandise.

 Reservations are highly encouraged



SCAN FOR
MORE INFO



The Gallery Store by ABRY

Books and museum gifts

City Hall Wing, Level 1

Daily 10am–7pm



Courtyard Café & Lounge

Asian fusion café, \$\$

Supreme Court Wing, Level 1

Tel: 6384 1874

Café: Sun–Thu 9.30am–7pm,
Fri 9.30am–10pm, Sat 9.30am–8pm |
Lounge: Daily 10am–7pm, Fri 7–10pm



Hachi Restaurant

Japanese restaurant, \$\$\$

Supreme Court Wing, Level 1

Tel: 6734 9622

Mon–Fri noon–2.30pm, 6–11pm |
Sat 6–11pm



Smoke & Mirrors

Cocktail bar, \$\$\$

City Hall Wing, Level 6

Tel: 8380 6811

Mon–Wed 6pm–midnight |
Thu–Sat 6pm–1am |
Sun 5pm–midnight



The Great Mischief

Spanish café, Muslim friendly, \$\$

City Hall Wing, Level 1

Tel: 8721 3150

Daily 10am–9.30pm

OUR LATEST PUBLICATION

Our illustrated monographs on Singapore artistic forerunners Lim Tze Peng, Kim Lim and Teo Eng Seng offer rare insights into their philosophies of art.

Available at **The Gallery Store by ABRY** or online at abry.global.



GALLERY PUBLICATIONS

Explore the art of Singapore and Southeast Asia through our illustrated publications. Our growing range includes research titles and children's books. Check them out at **The Gallery Store by ABRY** or online at abry.global.



National Kitchen by Violet Oon Singapore

Singaporean restaurant, \$\$

City Hall Wing, Level 2

Tel: 9834 9935

Lunch and Dinner: Daily noon–3pm,
6–10.30pm | High Tea: Fri–Sun,
public holidays 3–5pm



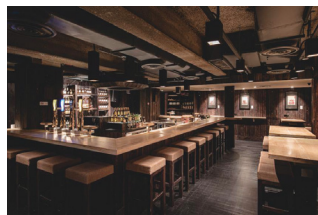
Odette

Modern French restaurant, \$\$\$\$

Supreme Court Wing, Level 1

Tel: 6385 0498

Tue–Sat noon–1.15pm (last seating),
Mon–Sat 6.30–8pm (last seating),
Closed on Sun and public holidays



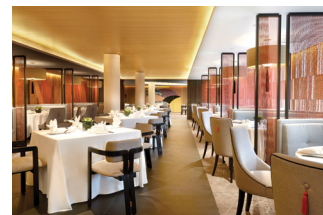
The Public Eight

Japanese bar, \$\$\$

Supreme Court Wing, Level 1

Tel: 6242 5590

Thu–Sat 6pm–midnight



YÀN

Chinese restaurant, \$\$\$

City Hall Wing, Level 5

Tel: 9272 7522

Daily 11.30am–2.30pm, 6–10pm

Admissions

Purchase your Gallery Passes online or on-site from our self-service kiosks. Check out our latest promotions and rates at nationalgallery.sg/admissions.



SCAN TO PURCHASE

GALLERY PASS TYPE	STANDARD	LOCAL*
General Admission + Free Guided Tours Admits one to these exhibitions: <ul style="list-style-type: none"> ▪ <i>Singapore Stories: Pathways and Detours in Art</i> ▪ <i>Becoming Lim Tze Peng</i> ▪ <i>Between Declarations and Dreams</i> ▪ <i>Figuring a Scene</i> 	\$20	FREE
Special Exhibition Admits one to two special exhibitions: <ul style="list-style-type: none"> ▪ <i>Teo Eng Seng: We're Happy. Are You Happy?</i> ▪ <i>Kim Lim: The Space Between. A Retrospective</i> 	\$25	\$15
All Access General Admission + Special Exhibition	\$30	REFER TO FOOTNOTE [^]

FREE ADMISSION FOR:

- Gallery Insiders
- Children aged 6 and below
- Local/locally based students and teachers*
- Persons with disabilities (PWD) and their caregivers

CONCESSION AT \$5 OFF FOR:

- Children aged 7–12
- Seniors aged 60 and above
- Full-time National Servicemen (NSFs) excluding foreign personnel
- Overseas students and teachers*

* Rate for locals apply to Singapore Citizens and Permanent Residents.

[^] For locals, purchasing a Special Exhibition pass automatically upgrades you to an All Access pass, granting entry to all galleries.

From qualifying institutions only. Valid identification is required.

FREE AND EASY ART ENCOUNTERS FOR ALL

No Gallery Pass is required for:

- **City Hall Wing, Level B1, The Ngee Ann Kongsi Concourse Gallery**
- **City Hall Wing, Level 1, Keppel Centre for Art Education**
- **City Hall Wing, Level 4, ArchiGallery**
Listening to Architecture: The Gallery's Histories and Transformations
- **City Hall Wing, Level 5, Ng Teng Fong Roof Garden Gallery**
Ng Teng Fong Roof Garden Commission: *GLISTEN* by Lisa Reihana
- **City Hall Wing, Level 6, Padang and Coleman Deck**
- **Supreme Court Wing, Level 3, Chief Justice's Chamber & Office**
Laws of Our Land: Foundations of a New Nation

Membership

Enjoy admission privileges, free parking and discounts on dining and shopping. Join a community of art enthusiasts and elevate your art experience.



SCAN TO SIGN UP

Over \$100 worth of vouchers upon sign-up!

Membership Type	EXPLORER	INSIDER
	FREE	STANDARD: \$35 / \$30 [^] LOCAL*: \$20 / \$15 [^]
Free parking daily	1 hour	2 hours
Stay updated on seasonal offers	✓	✓
Unlimited free access to all exhibitions		✓
Pre-opening and after hours exhibition viewing		✓
Members-only events		✓
Shopping and dining discounts		Up to 20%
Early bird access to exclusive offers		✓
Earn points and redeem for rewards		✓

Free parking daily

1 hour

2 hours

Stay updated on seasonal offers



Unlimited free access to all exhibitions



Pre-opening and after hours exhibition viewing



Members-only events



Shopping and dining discounts

Up to 20%

Early bird access to exclusive offers



Earn points and redeem for rewards



To find out more, please email membership@nationalgallery.sg.

* Rate for locals apply to Singapore Citizens and Permanent Residents.

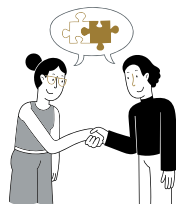
[^] Concessions are available for students, children aged 7–12 and seniors aged 60 and above. Offers are accurate at time of print.

Support the Gallery

As a registered Charity and an Institute of Public Character, National Gallery Singapore relies on your support to build collections, engage in research, develop programmes and bring art to everyone.



SCAN TO
DONATE



Be our Corporate Partner

Corporates can support us as an Exhibition or Programme Partner. The Gallery offers bespoke partnership opportunities to increase brand awareness while giving back to the community as well as engaging clients with unique art experiences.



Community, Education and Exhibition Partnerships

Generate new knowledge in the visual arts and engage underserved communities with impactful programmes. Help champion a thoughtful, creative and inclusive society.



Adopt an Artwork

Adopting artworks from our collection will help us acquire new artworks that strengthen the narrative of Southeast Asian art history. You can also collectively adopt an artwork with fellow art enthusiasts from \$50 via [Adopt Now].



Donate a Work of Art

Join other forward-thinking donors and gift an artwork, helping us to build a significant national collection, enrich our cultural heritage and ensure its enduring legacy for future generations.



Make a Bequest

Celebrate a loved one by donating in memory of them or consider leaving a legacy gift to the Gallery in your will. Your generosity will be appreciated for generations to come.

BE OUR PATRON

Be part of an art-loving community and enjoy exclusive privileges including tours, experiences and behind-the-scenes access.



SCAN TO BE A
PATRON TODAY

GALLERY PATRON

National Gallery Singapore would like to thank our corporate partners for their generous support.

Development Partner



Founding Partners



Partner



Supported by



For details on partnership opportunities, please visit nationalgallery.sg/join-give/support-the-gallery or contact us at SupportUs@nationalgallery.sg.

All gifts made are eligible for tax deductions in accordance with IRAS guidelines.

nationalgallery.sg

6271 7000

info@nationalgallery.sg

1 St Andrew's Road
Singapore 178957

Daily 10am–7pm



NationalGallerySingapore



NatGallerySG



新加坡国家美术馆

Copyright in the content in this brochure may also reside in persons and entities other than, and in addition to, the Gallery. The Gallery seeks to share our artworks with as many people as we can. We are fully committed to respecting the intellectual property rights of others and always use our best efforts to obtain permission for artwork images used. Please contact us should you have any queries about this. Unless otherwise mentioned, all artwork images have been provided through the courtesy of National Heritage Board, Singapore and artworks featured are from the collection of National Gallery Singapore. The Gallery Guide is published by National Gallery Singapore. All rights reserved. Materials in this publication may not be reproduced in part or in whole without written consent of the Gallery. Every effort has been made to ensure the accuracy of information within this publication. However, changes are sometimes unavoidable and the Gallery reserves the right to make modifications to the programmes and ticketing policy without prior notice. Please visit nationalgallery.sg for the most updated information. The views and opinions expressed by speakers, facilitators and docents at the workshops and tours do not necessarily represent the position of the Gallery. Published in December 2024. All information is correct at time of print.

PLEASE RETURN THIS BROCHURE FOR RECYCLING